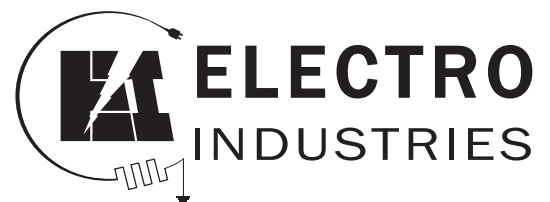


Electro Industries
Replacement Parts Book

Electric Heating
Equipment



1. Electro-Boiler™

Mini-Boiler – EMB-H-* Series	3
Mini-Boiler – EMB-S-* Series	4
WarmFlo Mini-Boiler – EMB-W-9	5
Mini-Boiler – EMB-* Series	6
TS Midsize Electro-Boiler – EB-M*-** Series	7
TS Standard Electro-Boiler – EB-S-** and EB-W*-** Series	9
TS Standard 3-Phase Electro-Boiler – EB-W*-**-2 Series	11
TS Commercial Electro-Boiler – EB-C*-** and EB-C*-**-** Series	12
WarmFlo Electro-Boiler – EB-W-** Series	14
Electro-Boiler – EB-L** and EB-** Series	15
Electro-Boiler – EB-R-** Series	16
Electro-Boiler – EB-E-** Series	17
Electro Blue Boiler – EBE-**	18

2. Electro-Mate® Plenum Heater

Electro EZ-Mate – EM-LV**4** Series	19
Electro EZ-Mate – EM-LD**4** Series	20
HeatChoice II – EH-U**-* (EM-EU***C*) Series	21
HeatChoice II – EH-D**-* (EM-ED***C*) Series	22
HeatChoice – EH-U**-* (EM-EU***C*) Series	23
HeatChoice – EH-D**-* (EM-ED***C*) Series	24
Electro-Mate - EM-EU***** Series	25
Electro-Mate - EM-LV***** and EM-LU***** Series	26
Electro-Mate - EM-LD***** Series	27
Electro-Mate Coleman – EM-LD****M Series	28
Electro-Mate WarmFlo II – EM-WU***** Series	29
Electro-Mate WarmFlo II – EM-WD***** Series	31
Electro-Mate WarmFlo II – EM-WU***H* Series	33
Electro-Mate WarmFlo II – EM-WD***H* Series	34
Electro-Mate WarmFlo – EM-WV***** Series	35
WarmFlo Select – EM-WU*****-SL* Series	36
WarmFlo Select – EM-WD*****-SL* Series	38

3. Duct Heater

Basic Element Duct Heater – EM-DI***** Series	40
WarmFlo Controlled Duct Heater – EM-WE***** Series	41
Custom Duct Heater – EM-II05154 and EM-II10114	42
Custom Duct Heater – EM-II05158 and EM-II10118	43
Custom Duct Heater – EM-II0515R and EM-II1011R	44

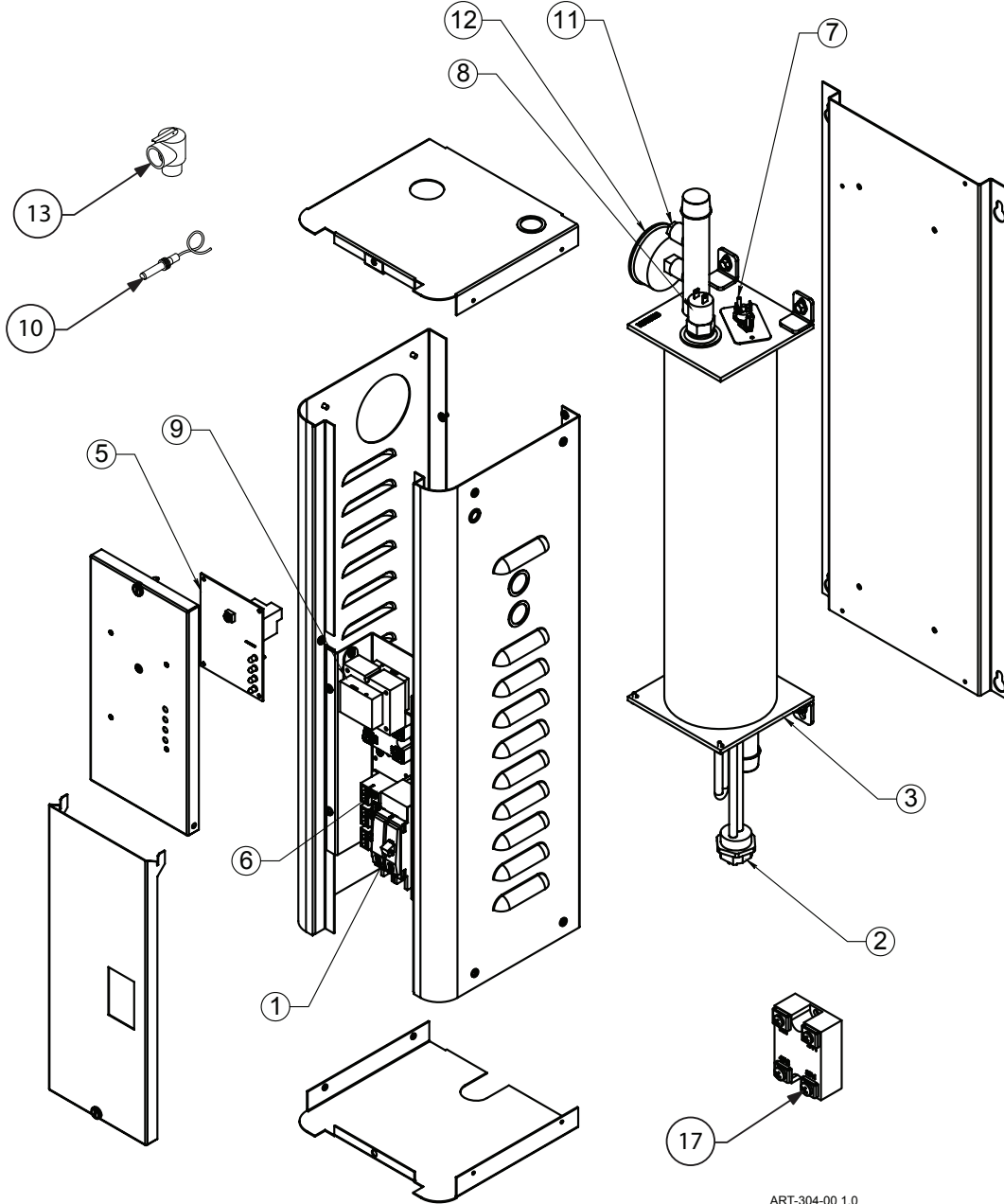
4. WarmFlo® Make-Up Air Heater

EM-WX0111R	45
EM-WX***** Series	46
EM-WX01-120-1-06	47
EM-WX**-240-1-** Series	48
EM-WC***** Series	49
EM-WM***** Series	50
EM-WH***** Series	51
EM-MC* and EM-MD* Series	52
EM-ME*, EM-MF*, and EM-MG* Series	53

5. WarmFlo® Air Handler/Electric Furnace

HE-***-21	54
---------------------------	----

Mini-Boiler™ EMB-H-* Series

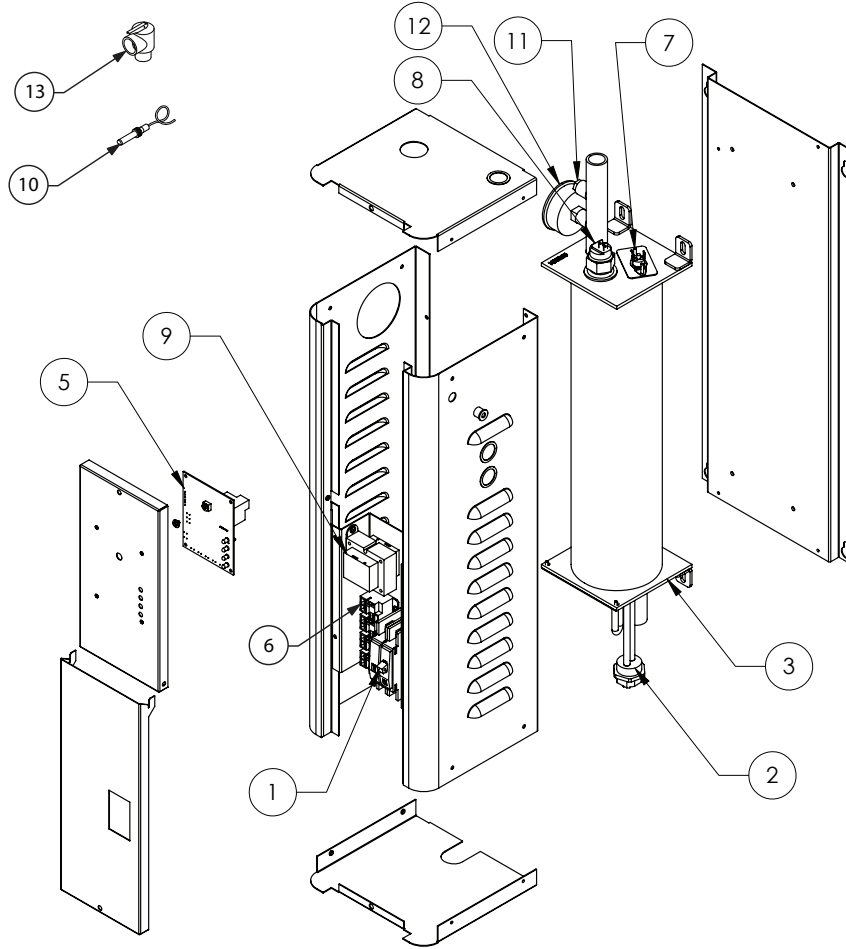


ART-304-00 1.0

Replacement Part #	Description
EMB-H-5	
1	5650 Square D 30-Amp Circuit Breaker
2	EB5520 4.5kW Element with Gasket
3	EMBHVS5 5kW Vessel Assembly
EMB-H-7	
1	5651 Square D 45-Amp Circuit Breaker
2	EB5524 2.5kW Element with Gasket – 240VAC
2	EB5520 4.5kW Element with Gasket
3	EMBHVS7 7kW Vessel Assembly
EMB-H-9	
1	5652 Square D 60-Amp Circuit Breaker
2	EB5520 4.5kW Element with Gasket
3	EMBHVS9 9kW Vessel Assembly

Replacement Part #	Description
Common Parts for the EMB-H-* Series	
5	EMBH5636 Control Board
6	5128C 30-Amp DC Relay
7	5532 205° Manual Reset Limit – Low Voltage
8	5546G 200° Auto Reset Limit
9	5541 40VA Transformer with Pigtails
10	WFS2 Supply Sensor
11	[EBTB5533 Sensor Well
12	5456A Pressure / Temperature Gauge
13	5453 30 psi Relief Valve
14	XEL7800 3/4" Pipe Elbow (<i>Not Shown</i>)
15	XNPL7300 3/4" x 2 1/2" Pipe Nipple (<i>Not Shown</i>)
16	XTEE7000 3/4" Pipe Tee (<i>Not Shown</i>)
17	4038KIT 50-Amp DC Triac Kit

Mini-Boiler™ EMB-S-* Series



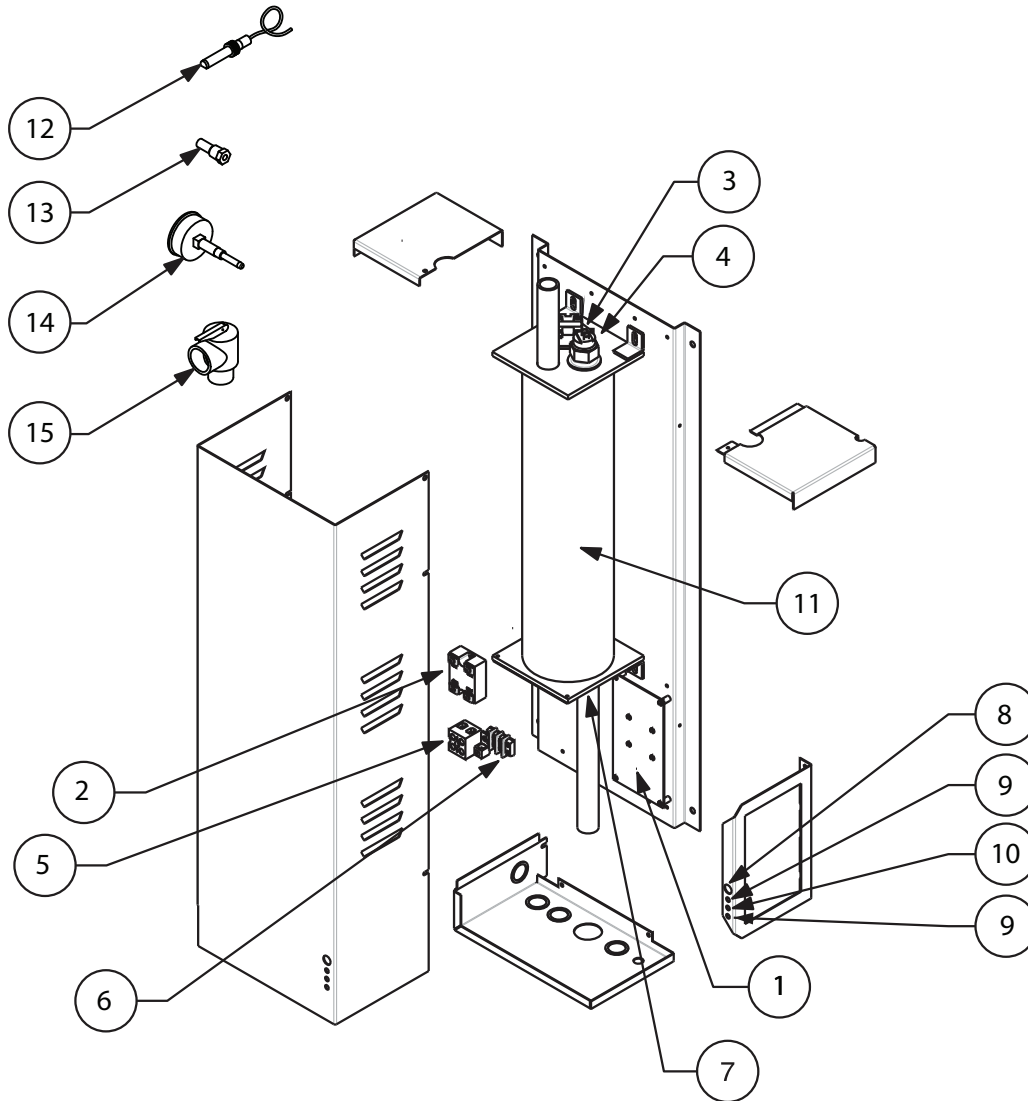
ART-225 2.0

Replacement Part #	Description	
EMB-S-1		
1	6636	Terminal Block
2	EB5520	4.5kW Element with Gasket
3	EMBSVS1	1kW Vessel Assembly
EMB-S-2		
1	6636	Terminal Block
2	EB5523	2.5kW Element with Gasket – 120VAC
3	EMBSVS2	2kW Vessel Assembly
EMB-S-4		
1	6636	Terminal Block
2	EB5523	2.5kW Element with Gasket – 120VAC
3	EMBSVS4	4.5kW Vessel Assembly
EMB-S-5		
1	5650	Square D 30-Amp Circuit Breaker
2	EB5520	4.5kW Element with Gasket
3	EMBSVS5	5kW Vessel Assembly
EMB-S-7		
1	5651	Square D 45-Amp Circuit Breaker
2	EB5524	2.5kW Element with Gasket – 240VAC
2	EB5520	4.5kW Element with Gasket
3	EMBSVS7	7kW Vessel Assembly

Replacement Part #	Description	
EMB-S-9		
1	5652	Square D 60-Amp Circuit Breaker
2	EB5520	4.5kW Element with Gasket
3	EMBSVS9	9kW Vessel Assembly
Common Parts for the EMB-S-* Series		
5	EMBS5636	Control Board
6	5128C	30-Amp DC Relay
7	5532	205° Manual Reset Limit – Low Voltage
8	5537G	190° Auto Reset Limit
9	5541	40VA Transformer with Pigtails
10	WFS2	Supply Sensor
11	[EBTB5533	Sensor Well
12	5456A	Pressure / Temperature Gauge
13	5453	30 psi Relief Valve
14	XEL7800	3/4" Pipe Elbow (Not Shown)
15	XNPL7300	3/4" x 2 1/2" Pipe Nipple (Not Shown)
16	XTEE7000	3/4" Pipe Tee (Not Shown)

WarmFlo® Mini-Boiler™

EMB-W-9

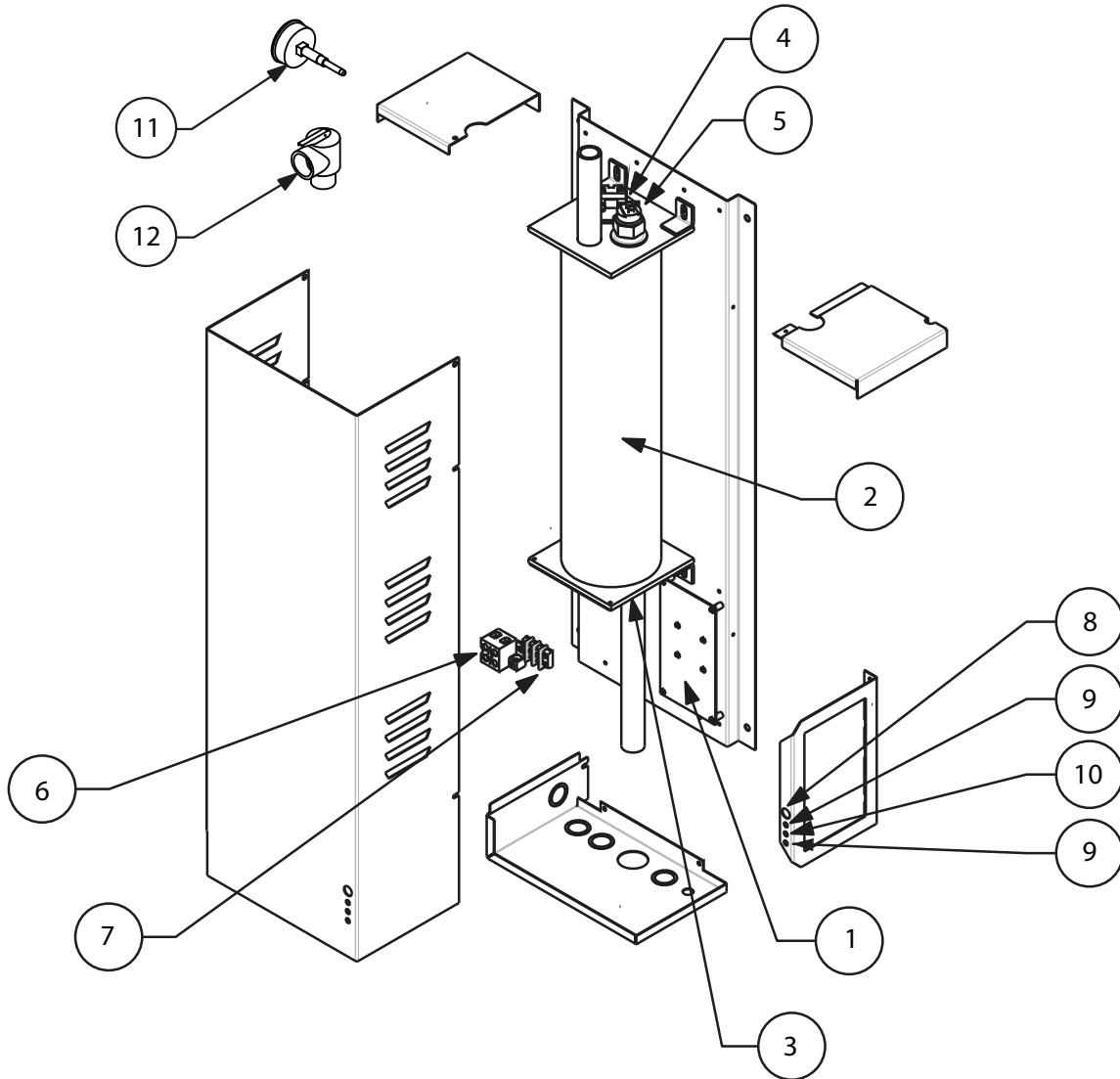


ART-182 1.0

Replacement Part #	Description	
1	EMB5621	Control Board
1a	UIC9769 R-065	Microchip v. 13.2* (Specify Code – A)
1b	UIC9267 R-101	Microchip v. 3.1* (Specify Code – A,)
1	WFCD25605	Control Board
2	4037KIT	50-Amp AC Triac Kit
3	5535	205° Manual Reset Limit
4	5538G	160° Auto Reset Limit
5	6636	Terminal Block
6	2232	Pump Terminal Block
7	EB5520	4.5 kW Element with Gasket
8	ULAMP2283	Red Indicator Light
9	ULAMP2287	Red Panel Mount LED
10	ULAMP2286	Amber Panel Mount LED

Replacement Part #	Description	
11	EMBVS9	9 kW Vessel Assembly
12	WFSB	Supply Sensor ("E" Sensor)
12	WFSST10FT	Supply Sensor ("D" Sensor) – Chip date before July 2004
13	[EBTB5533	Sensor Well
14	5456A	Pressure / Temperature Gauge
15	5453	30 psi Relief Valve
16	XBSH7125	3/4" x 1/4" Pipe Bushing (<i>Not Shown</i>)
17	XEL7800	3/4" Pipe Elbow (<i>Not Shown</i>)
18	XNPL7300	3/4" x 2 1/2" Pipe Nipple (<i>Not Shown</i>)
19	XTEE7000	3/4" Pipe Tee (<i>Not Shown</i>)
20	XTEE7050	3/4" Pipe Cross (<i>Not Shown</i>)
21	UFUSE0440	2-Amp Fast Blow Fuse (<i>Not Shown</i>)

Mini-Boiler™ EMB-* Series



ART-181 1.0

Replacement Part #	Description	
--------------------	-------------	--

EMB-2		
1	EMB15620	Control Board
2	EMBVS2	2.5 kW Vessel Assembly
3	EB5523	2.5 kW Element with Gasket (120V)

EMB-4		
1	EMB15620	Control Board
2	EMBVS4	4 kW Vessel Assembly
3	EB5523	2.5 kW Element with Gasket

EMB-5		
1	EMB5620	Control Board
2	EMBVS1AND5	1 and 5 kW Vessel Assembly
3	EB5520	4.5 kW Element with Gasket

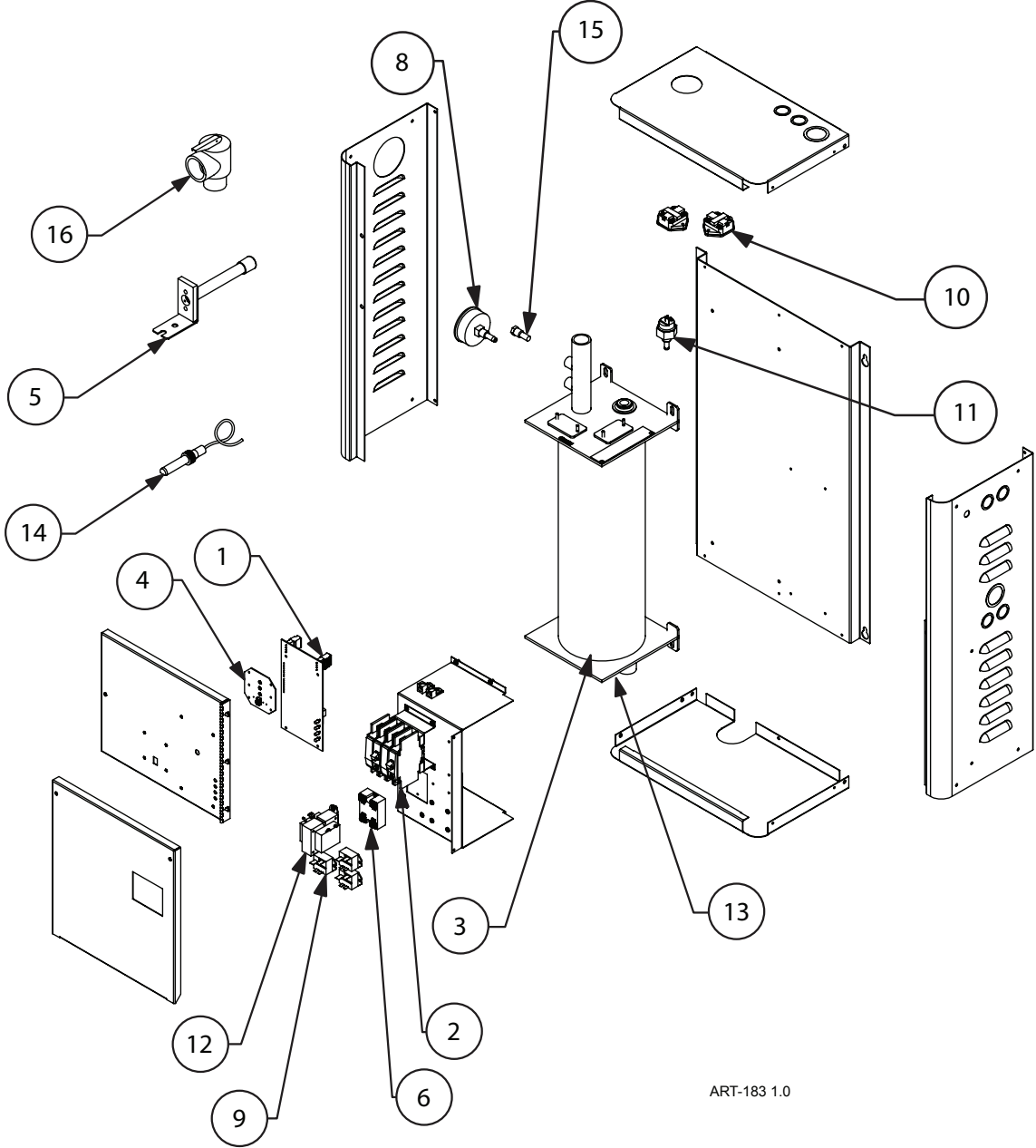
EMB-9		
1	EMB5620	Control Board
2	EMBVS9	9 kW Vessel Assembly
3	EB5520	4.5 kW Element with Gasket

Replacement Part #	Description	
--------------------	-------------	--

Common Parts for the EMB-* Series		
4	5535	205° Manual Reset Limit
5	5538G	160° Auto Reset Limit
6	6636	Terminal Block
7	2232	Pump Terminal Block
8	ULAMP2283	Red Indicator Light
9	ULAMP2287	Red Panel Mount LED
10	ULAMP2286	Amber Panel Mount LED
11	5456A	Pressure / Temperature Gauge
12	5453	30 psi Relief Valve
13	XBSH7125	3/4" x 1/4" Pipe Bushing (<i>Not Shown</i>)
14	XEL7800	3/4" Pipe Elbow (<i>Not Shown</i>)
15	XNPL7300	3/4" x 2 1/2" Pipe Nipple (<i>Not Shown</i>)
16	XTEE7000	3/4" Pipe Tee (<i>Not Shown</i>)
17	UFUSE0440	2-Amp Fast Blow Fuse (<i>Not Shown</i>)

TS Midsize Electro-Boiler™

EB-M*-** Series



ART-183 1.0

(SEE NEXT PAGE FOR PARTS LIST)

TS Midsize Electro-Boiler™

EB-M*-* * Series

Replacement Part #		Description
--------------------	--	-------------

EB-MS-10		
2	5652	Square D 60-Amp Circuit Breaker
3	EBMVS10	10 kW Vessel Assembly

EB-MS-15		
2	5650	Square D 30-Amp Circuit Breaker
2	5652	Square D 60-Amp Circuit Breaker
3	EBMVS15	15 kW Vessel Assembly

EB-MS-20		
2	5652	Square D 60-Amp Circuit Breaker
3	EBMVS20	20 kW Vessel Assembly

EB-MA-10		
2	5652	Square D 60-Amp Circuit Breaker
3	EBMVS10	10 kW Vessel Assembly
4	EBTSW5627	Standby Switch Board
6	4038KIT	50-Amp DC Triac Kit

EB-MA-15		
2	5650	Square D 30-Amp Circuit Breaker
2	5652	Square D 60-Amp Circuit Breaker
3	EBMVS15	15 kW Vessel Assembly
4	EBTSW5627	Standby Switch Board
6	4038KIT	50-Amp DC Triac Kit

EB-MA-20		
2	5652	Square D 60-Amp Circuit Breaker
3	EBMVS20	20 kW Vessel Assembly
4	EBTSW5627	Standby Switch Board
6	4038KIT	50-Amp DC Triac Kit

EB-MO-10/EB-MX-10		
2	5652	Square D 60-Amp Circuit Breaker
3	EBMVS10	10 kW Vessel Assembly
4	EBTSW5627	Standby Switch Board (MO only)
5	WFS25F	Outdoor Sensor
6	4038KIT	50-Amp DC Triac Kit

Replacement Part #		Description
--------------------	--	-------------

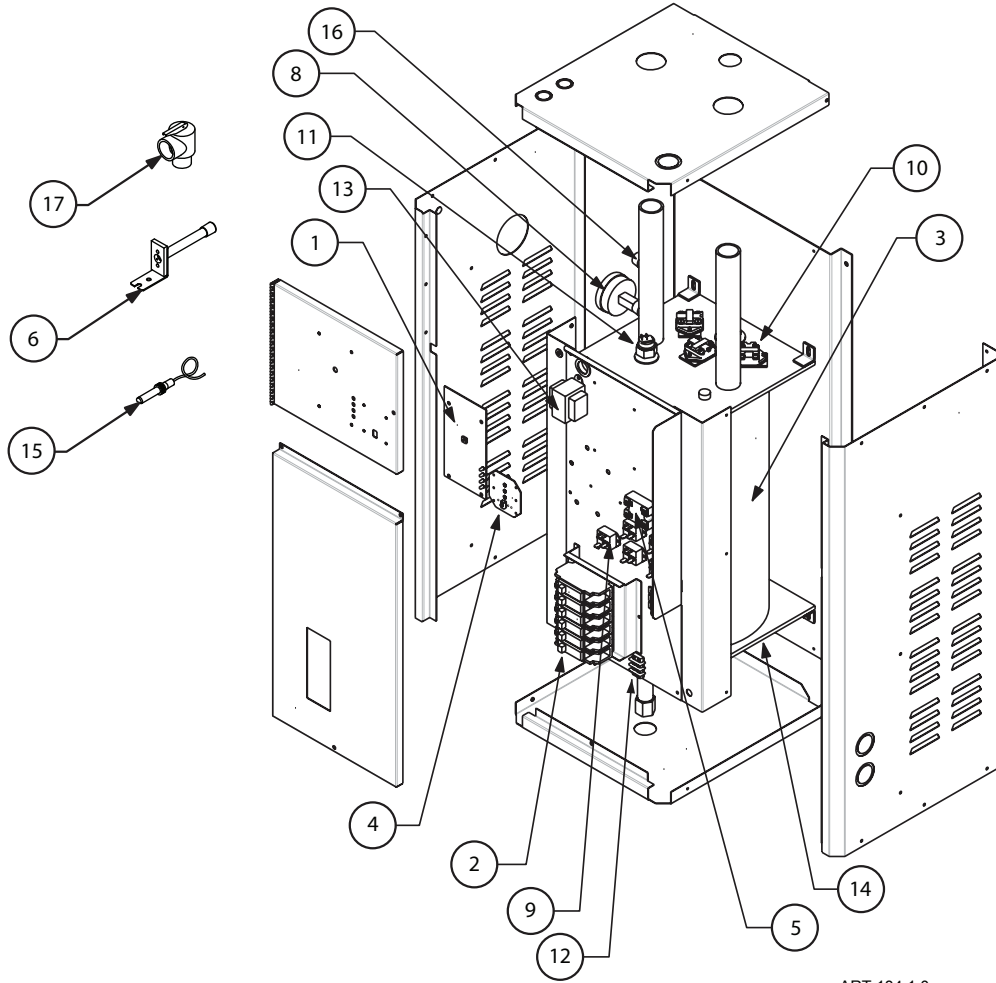
EB-MO-15/EB-MX-15		
2	5650	Square D 30-Amp Circuit Breaker
2	5652	Square D 60-Amp Circuit Breaker
3	EBMVS15	15 kW Vessel Assembly
4	EBTSW5627	Standby Switch Board (MO only)
5	WFS25F	Outdoor Sensor
6	4038KIT	50-Amp DC Triac Kit

EB-MO-20/EB-MX-20		
2	5652	Square D 60-Amp Circuit Breaker
3	EBMVS20	20 kW Vessel Assembly
4	EBTSW5627	Standby Switch Board (MO only)
5	WFS25F	Outdoor Sensor
6	4038KIT	50-Amp DC Triac Kit

Common Parts for the EB-M*-* * Series		
1	EB5623	Control Board
4	USW9814	Standby Switch, Panel Mount (EB-MX/EB-MS)
8	5456A	Pressure / Temperature Gauge
9	5128C	30-Amp DC Relay
10	5535	205° Manual Reset Limit
11	5537G	190° Auto Reset Limit
12	5541	40 VA Transformer with Pigtales
13	EB5526	5 kW Element with Gasket
14	WFSB	Supply Sensor
15	[EBTB5533	Sensor Well
16	5453	30 psi Relief Valve
17	XNPL7780	1" x 2½" Pipe Nipple (<i>Not Shown</i>)
18	XBSH7180	1" x ¾" Pipe Bushing (<i>Not Shown</i>)
19	XTEE7060	1" Pipe Tee (<i>Not Shown</i>)
20	XEL7850	1" 90° Pipe Elbow (<i>Not Shown</i>)
21	UFUSE0443	2-Amp Fast Blow Fuse (<i>Not Shown</i>)

TS Standard Electro-Boiler™

EB-S-** and EB-W*-** Series



ART-184 1.0

Replacement Part #	Description	
EB-S-13		
2	5639	GE 30-Amp Circuit Breaker
2	5640	GE 60-Amp Circuit Breaker
2	5650	Square D 30-Amp Circuit Breaker
2	5652	Square D 60-Amp Circuit Breaker
3	EBVS13	13 kW Vessel Assembly
7	EBCBW5420	Wiring Harness (<i>Not Shown</i>)

EB-S-18		
2	5640	GE 60-Amp Circuit Breaker
2	5652	Square D 60-Amp Circuit Breaker
3	EBVS18	18 kW Vessel Assembly
7	EBCBW5419	Wiring Harness (<i>Not Shown</i>)

Replacement Part #	Description	
EB-S-23		
2	5639	GE 30-Amp Circuit Breaker
2	5640	GE 60-Amp Circuit Breaker
2	5650	Square D 30-Amp Circuit Breaker
2	5652	Square D 60-Amp Circuit Breaker
3	EBVS23	23 kW Vessel Assembly
7	EBCBW5418	Wiring Harness (<i>Not Shown</i>)

EB-S-27		
2	5640	GE 60-Amp Circuit Breaker
2	5652	Square D 60-Amp Circuit Breaker
3	EBVS27	27 kW Vessel Assembly
7	EBCBW5417	Wiring Harness (<i>Not Shown</i>)

(PARTS LIST CONTINUED ON NEXT PAGE)

TS Standard Electro-Boiler™

EB-S-** and EB-W*-** Series

Replacement Part #		Description
EB-WA-13		
2	5639	GE 30-Amp Circuit Breaker
2	5640	GE 60-Amp Circuit Breaker
2	5650	Square D 30-Amp Circuit Breaker
2	5652	Square D 60-Amp Circuit Breaker
3	EBVS13	13 kW Vessel Assembly
4	EBTSW5627	Standby Switch Board
5	4038KIT	50-Amp DC Triac Kit

Replacement Part #		Description
EB-WA-18		
2	5640	GE 60-Amp Circuit Breaker
2	5652	Square D 60-Amp Circuit Breaker
3	EBVS18	18 kW Vessel Assembly
4	EBTSW5627	Standby Switch Board
5	4038KIT	50-Amp DC Triac Kit

Replacement Part #		Description
EB-WA-23		
2	5639	GE 30-Amp Circuit Breaker
2	5640	GE 60-Amp Circuit Breaker
2	5650	Square D 30-Amp Circuit Breaker
2	5652	Square D 60-Amp Circuit Breaker
3	EBVS23	23 kW Vessel Assembly
4	EBTSW5627	Standby Switch Board
5	4038KIT	50-Amp DC Triac Kit

Replacement Part #		Description
EB-WA-27		
2	5640	GE 60-Amp Circuit Breaker
2	5652	Square D 60-Amp Circuit Breaker
3	EBVS27	27 kW Vessel Assembly
4	EBTSW5627	Standby Switch Board
5	4038KIT	50-Amp DC Triac Kit

Replacement Part #		Description
EB-WO-13/EB-WX-13		
2	5639	GE 30-Amp Circuit Breaker
2	5640	GE 60-Amp Circuit Breaker
2	5650	Square D 30-Amp Circuit Breaker
2	5652	Square D 60-Amp Circuit Breaker
3	EBVS13	13 kW Vessel Assembly
4	EBTSW5627	Standby Switch Board
5	4038KIT	50-Amp DC Triac Kit
6	WFS25F	Outdoor Sensor

Replacement Part #		Description
EB-WO-18/EB-WX-18		
2	5640	GE 60-Amp Circuit Breaker
2	5652	Square D 60-Amp Circuit Breaker
3	EBVS18	18 kW Vessel Assembly
4	EBTSW5627	Standby Switch Board (WO only)
5	4038KIT	50-Amp DC Triac Kit
6	WFS25F	Outdoor Sensor

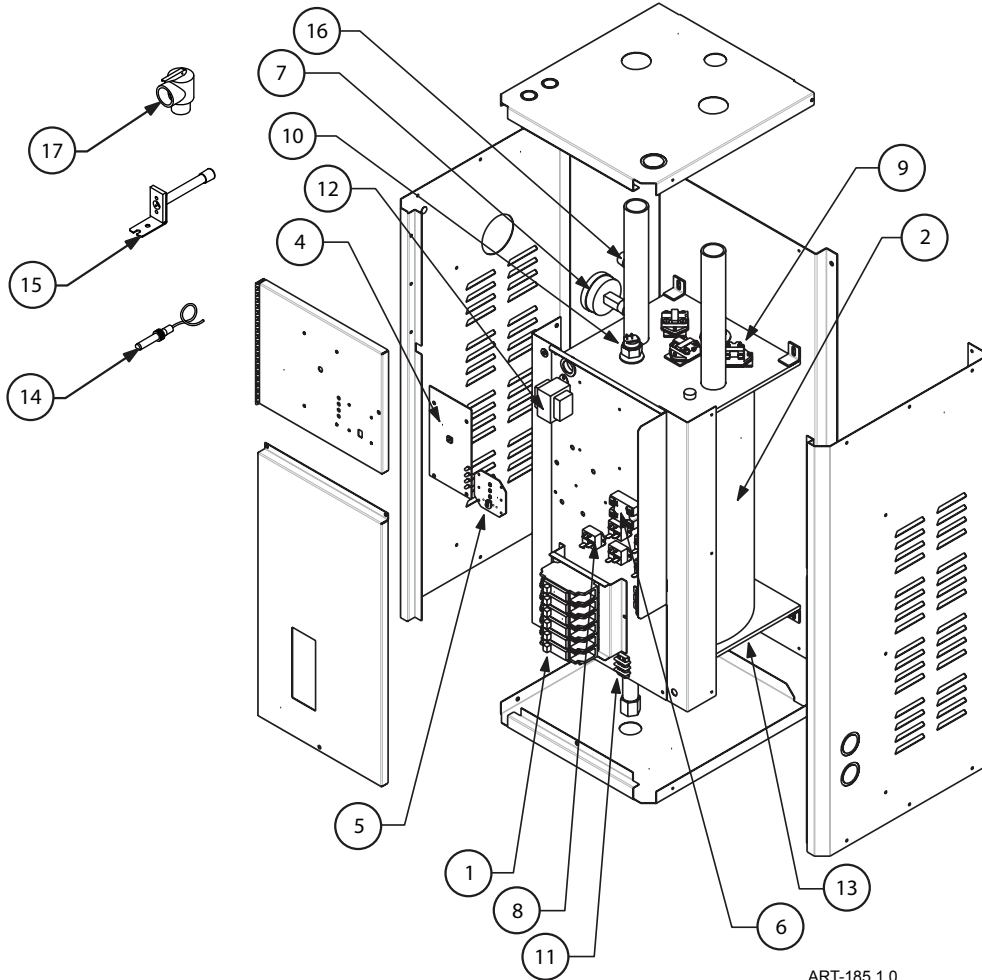
Replacement Part #		Description
EB-WO-23/EB-WX-23		
2	5639	GE 30-Amp Circuit Breaker
2	5640	GE 60-Amp Circuit Breaker
2	5650	Square D 30-Amp Circuit Breaker
2	5652	Square D 60-Amp Circuit Breaker
3	EBVS23	23 kW Vessel Assembly
4	EBTSW5627	Standby Switch Board (WO only)
5	4038KIT	50-Amp DC Triac Kit
6	WFS25F	Outdoor Sensor

Replacement Part #		Description
EB-WO-27/EB-WX-27		
2	5640	GE 60-Amp Circuit Breaker
2	5652	Square D 60-Amp Circuit Breaker
3	EBVS27	27 kW Vessel Assembly
4	EBTSW5627	Standby Switch Board (WO only)
5	4038KIT	50-Amp DC Triac Kit
6	WFS25F	Outdoor Sensor

Common Parts for the EB-S-** and EB-W*-** Series		
1	EB5623	Control Board
4	USW9814	Standby Switch, Panel Mount (EB-WX/EB-S)
8	5456A	Pressure / Temperature Gauge
9	5128C	30-Amp DC Relay
10	5535	205° Manual Reset Limit
11	5537G	190° Auto Reset Limit
12	2232	Pump Terminal Block
13	5541	40VA Transformer with Pigtails
14	EB5520	4.5 kW Element with Gasket
15	WFSB	Supply Sensor
16	[EBTB5533	Sensor Well
17	5453	30 psi Relief Valve
18	XEL7800	¼" Pipe Elbow (<i>Not Shown</i>)
19	XNPL7775	¾" x 12" Pipe Nipple (<i>Not Shown</i>)
20	XCPL7075	¾" Pipe Coupling (<i>Not Shown</i>)
21	UFUSE0443	2-Amp Fast Blow Fuse (<i>Not Shown</i>)

TS Standard 3-Phase Electro-Boiler™

EB-W*-**-2 Series

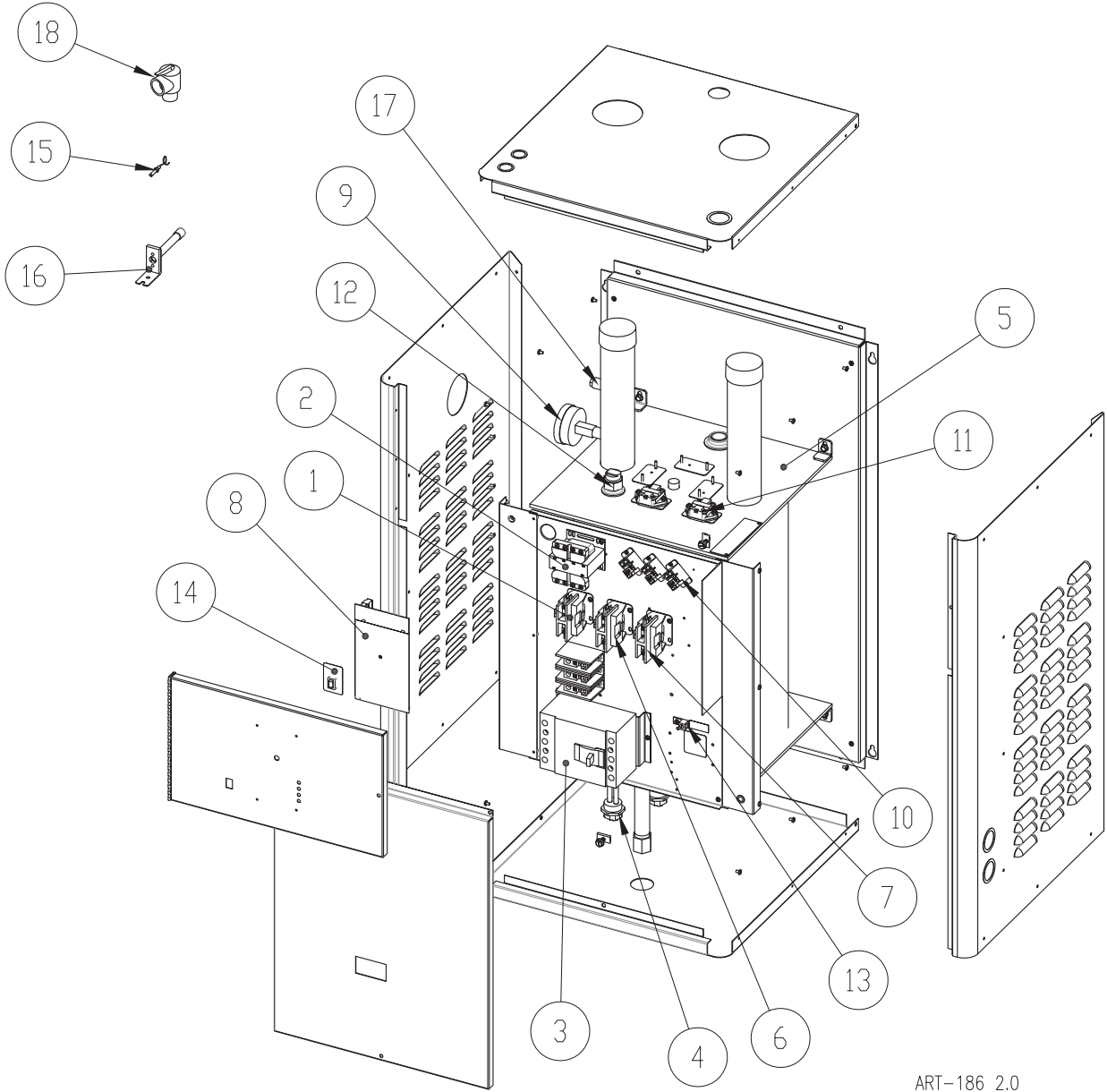


ART-185 1.0

Replacement Part #	Description	
EB-WO-13-2/EB-WX-13-2		
1	5670	GE 50-Amp 3-Phase Circuit Breaker
1	5655	Square D 50-Amp 3-Phase Circuit Breaker
2	EBVS13-2	13 kW 3-Phase Vessel Assembly
EB-WO-27-2/EB-WX-27-2		
1	5672	GE 100-Amp 3-Phase Circuit Breaker
1	5658	Square D 100-Amp 3-Phase Circuit Breaker
2	EBVS27-2	27 kW 3-Phase Vessel Assembly

Replacement Part #	Description	
Common Parts for the EB-WO-**-2 and EB-WX-**-2 3-Phase Series		
4	EB5623	Control Board
5	EBTSW5627	Standby Switch Board (WO only)
5	USW9814	Standby Switch, Panel Mount (EB-WX)
6	4038KIT	50-Amp DC Triac Kit
7	5456A	Pressure / Temperature Gauge
8	5128C	30-Amp DC Relay
9	5535	205° Manual Reset Limit
10	5537G	190° Auto Reset Limit
11	2232	Pump Terminal Block
12	5541	40VA Transformer with Pigtails
13	EB5521	4.5 kW Element with Gasket (3 Phase)
14	WFSB	Supply Sensor
15	WFS25F	Outdoor Sensor
16	[EBTB5533	Sensor Well
17	5453	30 psi Relief Valve
18	XEL7800	3/4" Pipe Elbow (Not Shown)
19	XNPL7775	3/4" x 12" Pipe Nipple (Not Shown)
20	XCPL7075	3/4" Pipe Coupling (Not Shown)
21	UFUSE0443	2-Amp Fast Blow Fuse (Not Shown)

TS Commercial Electro-Boiler™ EB-C*-** and EB-C*-**-** Series



ART-186 2.0

(SEE NEXT PAGE FOR PARTS LIST)

TS Commercial Electro-Boiler™

EB-C*-** and EB-C*-**-** Series

Replacement Part #		Description
EB-CA-18-48/EB-CO-18-48/EB-CX-18-48		
1	5528	30-Amp Single Pole Contactor Relay
2	5542	50 VA Transformer
3	5668-30	Square D 30-Amp 3 Phase Circuit Breaker
4	EB5525	6 kW Element with Gasket
5	EBVS18-48	18 kW Vessel Assembly

Replacement Part #		Description
EB-CA-36-48/EB-CO-36-48/EB-CX-36-48		
1	5528	30-Amp Single Pole Contactor Relay
2	5542	50 VA Transformer
3	5662	Square D 60-Amp 3 Phase Circuit Breaker
4	EB5525	6 kW Element with Gasket
5	EBVS36-48	36 kW Vessel Assembly
6	5126	30-Amp Two Pole Contactor Relay

Replacement Part #		Description
EB-CA-54-48/EB-CO-54-48/EB-CX-54-48		
1	5528	30-Amp Single Pole Contactor Relay
2	5542	50 VA Transformer
3	5663	Square D 80-Amp 3 Phase Circuit Breaker
4	EB5525	6 kW Element with Gasket
5	EBVS54-48	54 kW Vessel Assembly
6	5126	30-Amp Two Pole Contactor Relay
7	5527	30-Amp Three Pole Contactor Relay

Replacement Part #		Description
EB-CA-27-20/EB-CO-27-20/EB-CX-27-20		
1	5528	30-Amp Single Pole Contactor Relay
2	5541	40VA Transformer with Pigtails
3	5658	Square D 100-Amp 3 Phase Circuit Breaker
4	EB5521	4.5 kW Element with Gasket (3-Phase)
5	EBVS27-20	27 kW Vessel Assembly
6	5126	30-Amp Two Pole Contactor Relay

Replacement Part #		Description
EB-CA-40-20/EB-CO-40-20/EB-CX-40-20		
1	5528	30-Amp Single Pole Contactor Relay
2	5541	40 VA Transformer with Pigtails
3	5660	Square D 150-Amp 3 Phase Circuit Breaker
4	EB5521	4.5 kW Element with Gasket (3-Phase)
5	EBVS40-20	40 kW Vessel Assembly
6	5126	30-Amp Two Pole Contactor Relay
7	5527	30-Amp Three Pole Contactor Relay

Replacement Part #		Description
EB-CA-27-24/EB-CO-27-24/EB-CX-27-24		
1	5528	30-Amp Single Pole Contactor Relay
2	5541	40 VA Transformer with Pigtails
3	5657	Square D 80-Amp 3 Phase Circuit Breaker
4	EB5520	4.5 kW Element with Gasket
5	EBVS27-24	27 kW Vessel Assembly
6	5126	30-Amp Two Pole Contactor Relay

Replacement Part #		Description
EB-CA-40-24/EB-CO-40-24/EB-CX-40-24		
1	5528	30-Amp Single Pole Contactor Relay
2	5541	40VA Transformer with Pigtails
3	5659	Square D 125-Amp 3 Phase Circuit Breaker
4	EB5520	4.5 kW Element with Gasket
5	EBVS40-24	40 kW Vessel Assembly
6	5126	30-Amp Two Pole Contactor Relay
7	5527	30-Amp Three Pole Contactor Relay

Replacement Part #		Description
EB-CA-31/EB-CO-31/EB-CX-31		
1	5528	30-Amp Single Pole Contactor Relay
2	5541	40VA Transformer with Pigtails
3	5653	Square D 80-Amp Circuit Breaker
3	5643S	Square D 100-Amp Circuit Breaker
4	EB5520	4.5 kW Element with Gasket
5	EBVS31	31 kW Vessel Assembly
6	5126	30-Amp Two Pole Contactor Relay

Replacement Part #		Description
EB-CA-36/EB-CO-36/EB-CX-36		
2	5541	40VA Transformer with Pigtails
3	5643S	Square D 100-Amp Circuit Breaker
4	EB5520	4.5 kW Element with Gasket
5	EBVS36	36 kW Vessel Assembly
6	5126	30-Amp Two Pole Contactor Relay

Replacement Part #		Description
EB-CA-40/EB-CO-40/EB-CX-40		
2	5541	40VA Transformer with Pigtails
3	5646	Square D 125-Amp Circuit Breaker
4	EB5526	5 kW Element with Gasket
5	EBVS40	40 kW Vessel Assembly
6	5126	30-Amp Two Pole Contactor Relay

Replacement Part #		Description
EB-CA-44/EB-CO-44/EB-CX-44		
2	5541	40VA Transformer with Pigtails
3	5646	Square D 125-Amp Circuit Breaker
4	EB5522	5.5 kW Element with Gasket
5	EBVS44	44 kW Vessel Assembly
6	5126	30-Amp Two Pole Contactor Relay

Common Parts for the EB-C*-** and EB-C*-**-** Series		
8	EB5623	Control Board
9	5456	Pressure / Temperature Gauge
10	5128C	30-Amp DC Relay
11	5535	205° Manual Reset Limit
12	5537G	190° Auto Reset Limit
13	VLUG5526	Main Terminal Block
14	USW9814	Standby Switch, Panel Mount (EB-CX)
15	WFSB	Supply Sensor
16	WFS25F	Outdoor Sensor
17	[EBTB5533	Sensor Well
18	5453	30 psi Relief Valve
19	XEL7800	¾" Pipe Elbow (Not Shown)
20	XNPL7775	¾" x 12" Pipe Nipple (Not Shown)
21	XCPL7075	¾" Pipe Coupling (Not Shown)
22	UFUSE0443	2-Amp Fast Blow Fuse (Not Shown)

WarmFlo® Electro-Boiler™

EB-W-** Series

Replacement Part #	Description
EB-W-13	
5639	GE 30-Amp Circuit Breaker
5640	GE 60-Amp Circuit Breaker
EB-W-18	
5640	GE 60-Amp Circuit Breaker
EB-W-23	
5123	Upperstage Relay Board (EMR1B8102B)
5639	GE 30-Amp Circuit Breaker
5640	GE 60-Amp Circuit Breaker
EB-W-27	
5123	Upperstage Relay Board (EMR1B8102B)
5640	GE 60-Amp Circuit Breaker

Replacement Part #	Description
Common Parts for the EB-W-** Series (WarmFlo II)	
WF2BK	Control Board
WFR3T5616	Relay Board
WFIBT5619B	Pump / Thermostat Board
WFSST05FT	Supply Sensor (<i>Boilers Manufactured before 7/2004 – Corresponds with Microchip v. 2.2*</i>)
WFSOF	Outdoor Sensor (<i>Boilers Manufactured before 7/2004 – Corresponds with Microchip v. 2.2*</i>)
WFSB	Supply Sensor (<i>Boilers Manufactured after 7/2004 – Corresponds with Microchip v. 2.3*</i>)
WFS25F	Outdoor Sensor (<i>Boilers Manufactured after 7/2004 – Corresponds with Microchip v. 2.3*</i>)
[EBTB5533	Sensor Well
4037KIT	50-Amp Triac Kit
5456A	Pressure / Temperature Gauge
5535	205° Manual Reset Limit
5537G	190° Auto Reset Limit
EB5520	4.5kW Element with Gasket
UFUSE0440	2-Amp Fast Blow Fuse
5453	30 psi Relief Valve

Electro-Boiler™

EB-L-** and EB-** Series

Replacement Part #	Description
--------------------	-------------

EB-L-13 / EB-13	
D5639S	Square D 30-Amp Circuit Breaker
D5640S	Square D 60-Amp Circuit Breaker
5639	GE 30-Amp Circuit Breaker
5640	GE 60-Amp Circuit Breaker

EB-L-18 / EB-18	
D5640S	Square D 60-Amp Circuit Breaker
5640	GE 60-Amp Circuit Breaker

EB-L-23 / EB-23	
EMR3D8410	3 rd Stage Relay Board
D5639S	Square D 30-Amp Circuit Breaker
D5640S	Square D 60-Amp Circuit Breaker
5639	GE 30-Amp Circuit Breaker
5640	GE 60-Amp Circuit Breaker

EB-L-27 / EB-27	
EMR3D8410	3 rd Stage Relay Board
D5640S	Square D 60-Amp Circuit Breaker
5640	GE 60-Amp Circuit Breaker

Replacement Part #	Description
--------------------	-------------

Common Parts for the EB-L-** and EB-** Series	
EM5835C	Dual Fuel Control Module
EM5845	Dual Fuel Control Board
EB5515	Relay Board
5530	Inlet Emersion Aquastat
D5450	Aquastat Control
5456A	Pressure / Temperature Gauge
5126	30-Amp Two Pole Contactor Relay
5535	205° Manual Reset Limit
5537G	190° Auto Reset Limit
2232	Pump Terminal Block
1467	40VA Transformer with Pigtails
D5440	Square D 15-Amp Circuit Breaker
EB5520	4.5 kW Element with Gasket
UFUSE0440	2-Amp Fast Blow Fuse
5453	30 psi Relief Valve

Electro-Boiler™

EB-R-** Series

Replacement Part #	Description
EB-R-13	
5639	GE 30-Amp Circuit Breaker
5640	GE 60-Amp Circuit Breaker
EB-R-18	
5640	GE 60-Amp Circuit Breaker
EB-R-23	
EMR3E8410	3 rd Stage Relay Board
5639	GE 30-Amp Circuit Breaker
5640	GE 60-Amp Circuit Breaker
EB-R-27	
EMR3E8410	3 rd Stage Relay Board
5640	GE 60-Amp Circuit Breaker

Replacement Part #	Description
Common Parts for the EB-R-** Series	
EB-5502	Control Board – Conversion Kit to DFC
EM5626-0	Pump Relay Board
5530	Inlet Emersion Aquastat
5456A	Pressure / Temperature Gauge
5126	30-Amp Two Pole Contactor Relay
5535	205° Manual Reset Limit
5538G	160° Auto Reset Limit
5541	40VA Transformer with Pigtails
EB5520	4.5 kW Element with Gasket
UFUSE0440	2-Amp Fast Blow Fuse
5453	30 psi Relief Valve

Electro-Boiler™

EB-E-** Series

Replacement Part #	Description
EB-E-13	
5639	GE 30-Amp Circuit Breaker
5640	GE 60-Amp Circuit Breaker
EB-E-18	
5640	GE 60-Amp Circuit Breaker
EB-E-23	
EMR3E8410	3 rd Stage Relay Board
5639	GE 30-Amp Circuit Breaker
5640	GE 60-Amp Circuit Breaker
EB-E-27	
EMR3E8410	3 rd Stage Relay Board
5640	GE 60-Amp Circuit Breaker

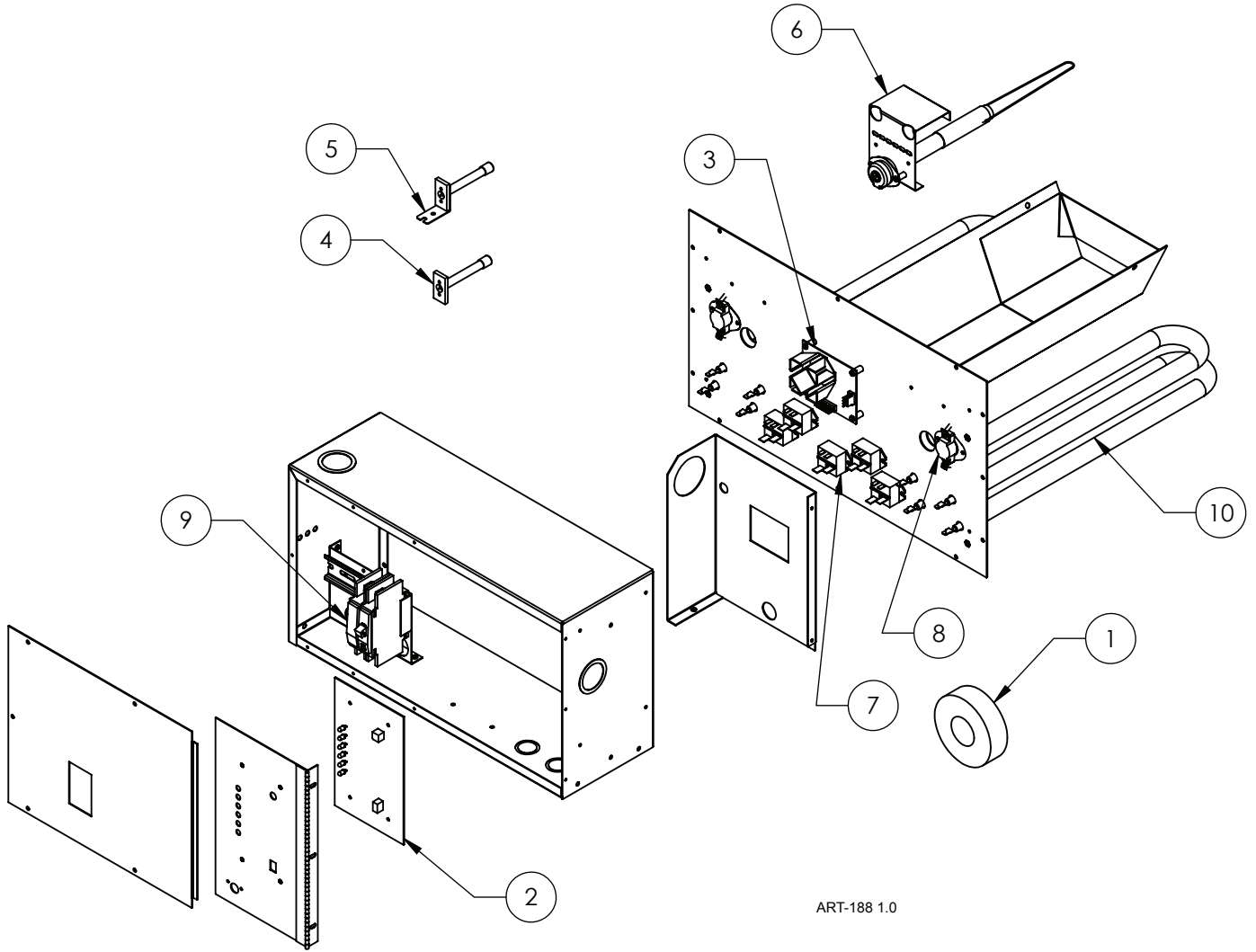
Replacement Part #	Description
Common Parts for the EB-E-** Series	
EB-5502	Control Board – Conversion Kit to DFC
EM5626-0	Pump Relay Board
5530	Inlet Emersion Aquastat
5456A	Pressure / Temperature Gauge
5126	30-Amp Two Pole Contactor Relay
5535	205° Manual Reset Limit
5537G	190° Auto Reset Limit
5541	40VA Transformer with Pigtails
EB5520	4.5 kW Element with Gasket
UFUSE0440	2-Amp Fast Blow Fuse
5453	30 psi Relief Valve

Electro Blue Boiler

EBE-** Series

Replacement Part #	Description
Parts for the EBE-20 and EBE-24	
EB-5412	DFC Conversion Kit
D5450	Aquastat Control
5456A	Pressure / Temperature Gauge
D5451	25-Amp Contactor Relay
5535	205° Manual Reset Limit
1467	40VA Transformer with Pigtails
D5440	Square D 15-Amp Circuit Breaker
D5639S	Square D 30-Amp Circuit Breaker
D5640S	Square D 60-Amp Circuit Breaker
D5461	4 kW Element (<i>EBE-24 Only</i>)
D5454	5 kW Element (<i>EBE-20 and EBE-24</i>)

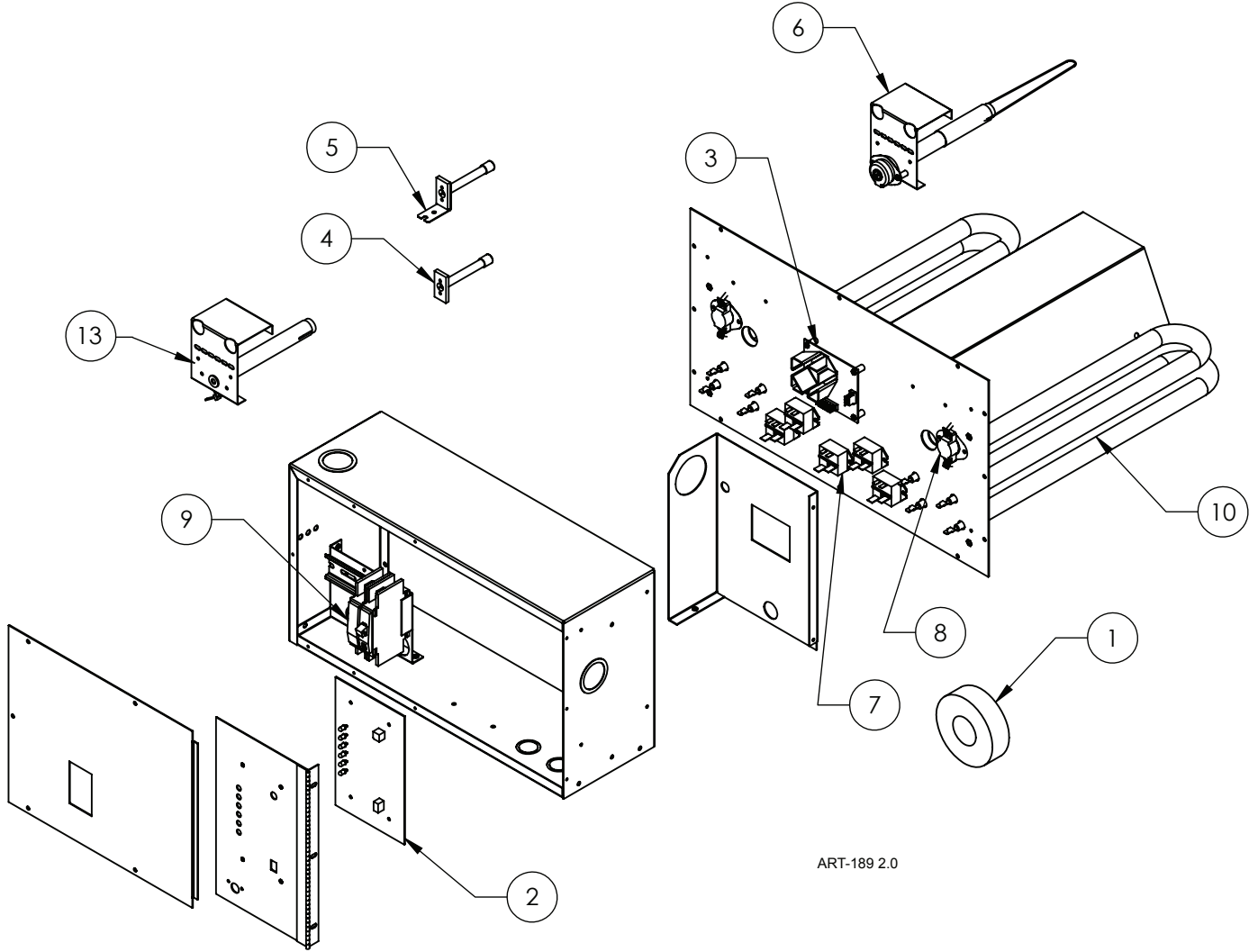
Electro EZ-Mate™ EM-LV**4** Series



ART-188 1.0

Replacement Part #		Description
EM-LV104Z5 / EM-LV104Z8		
EM-LV104L5 / EM-LV104L8		
1	3629	200-Amp 1:1000 Current Transformer
Common Parts for the EM-LV**** Series		
2	WF5665EZ	WarmFlo + Control Board
3	WFPDC5632	Relay Driver Board
4	WFS5F	Duct Sensor
5	WFS25F	Outdoor Sensor
6	EM5729	High Limit Probe
7	5128C	30-Amp DC Relay
8	5633	118° Auto High Limit
9	5640	GE 60-Amp Circuit Breaker
9	5652	Square D 60-Amp Circuit Breaker
10	EM5620	2.5 kW SpinFin Element

Electro EZ-Mate™ EM-LD**4** Series

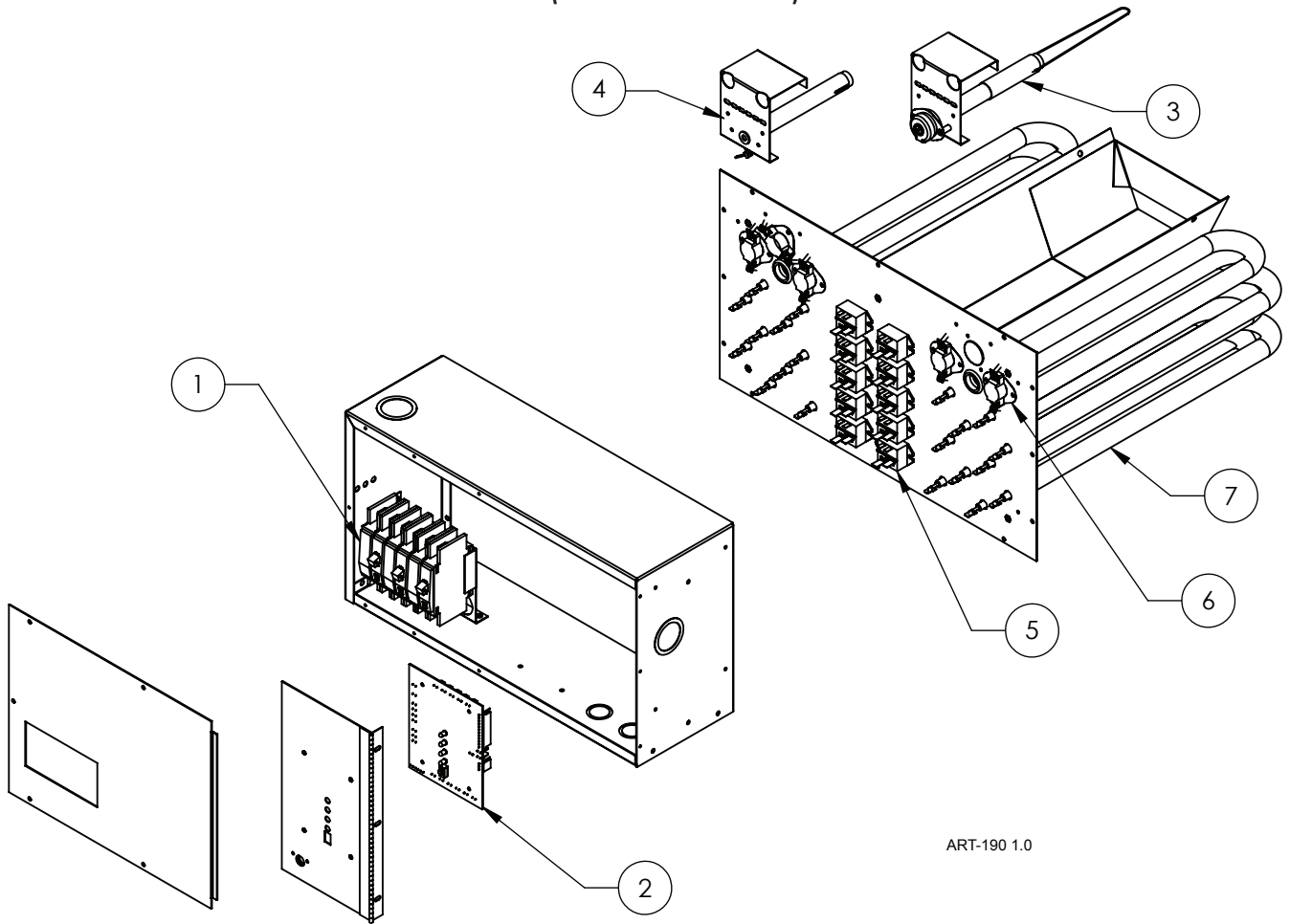


ART-189 2.0

Replacement Part #		Description
EM-LD104Z5 / EM-LD104Z8		
EM-LD104L5 / EM-LD104L8		
1	3629	200-Amp 1:1000 Current Transformer
Common Parts for the EM-LD**** Series		
2	WF5665EZ	WarmFlo + Control Board
3	WFPDC5632	Relay Board
4	WFS5F	Duct Sensor
5	WFS25F	Outdoor Sensor
6	EM5729	High Limit Probe
7	5128C	30-Amp DC Relay
8	5633	118° Auto High Limit
9	5640	GE 60-Amp Circuit Breaker
9	5652	Square D 60-Amp Circuit Breaker
10	EM5620	2.5 kW SpinFin Element
13	EM5714	Down Flow High Limit Probe (<i>Shipped Loose</i>)

HeatChoice II™

EH-U**-* (EM-EU***C*) Series



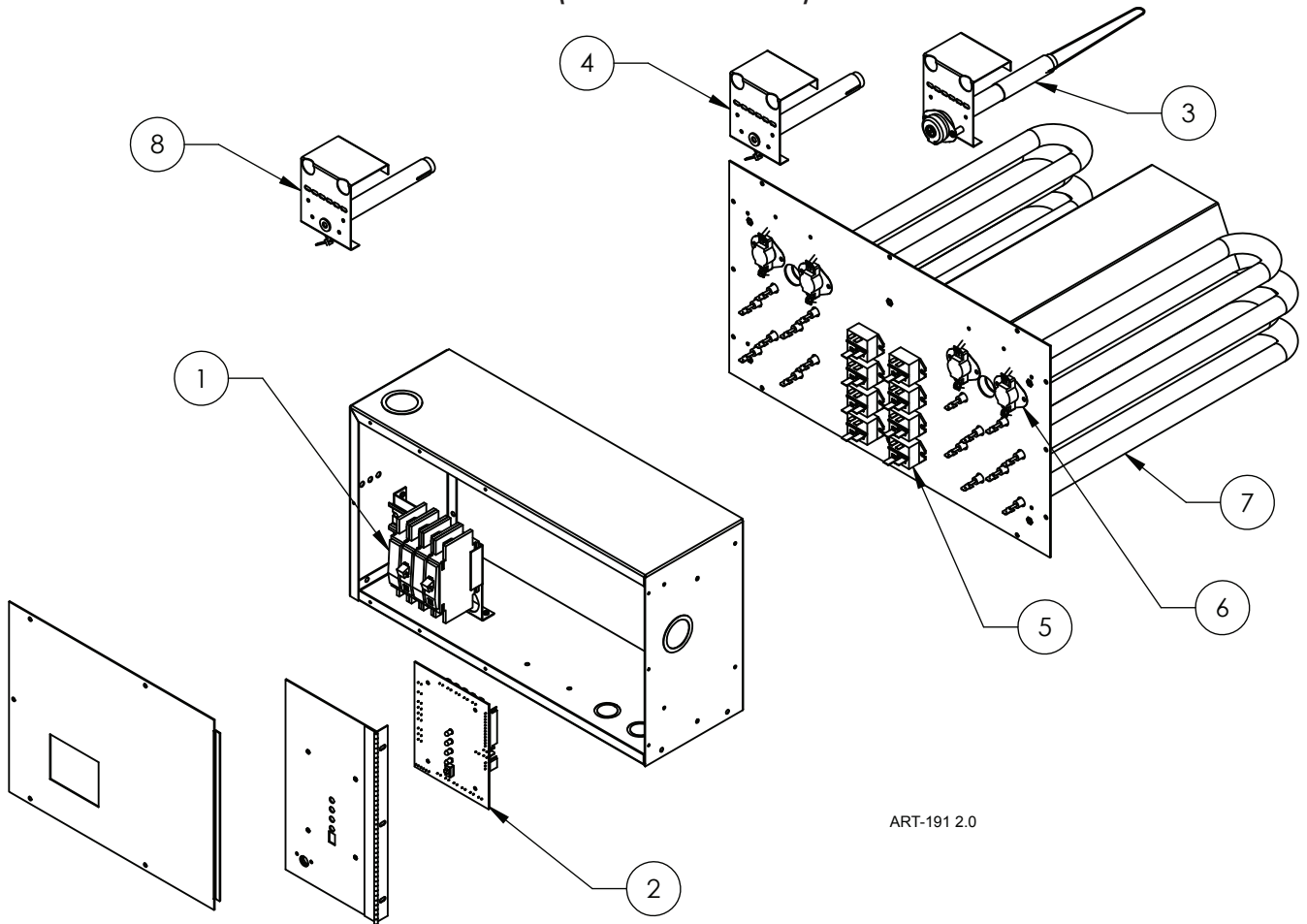
ART-190 1.0

Replacement Part #		Description
EH-U10-5 (EM-EU102C5) / EH-U10-8 (EM-EU102C8)		
1	5652	Square D 60-Amp Circuit Breaker
EH-U15-5 (EM-EU153C5) / EH-U-15-8 (EM-EU153C8)		
1	5650	Square D 30-Amp Circuit Breaker
1	5652	Square D 60-Amp Circuit Breaker
EH-U20-5 (EM-EU204C5) / EH-D20-8 (EM-EU204C8)		
1	5652	Square D 60-Amp Circuit Breaker
EH-U25-8 (EM-EU255C8)		
1	5650	Square D 30-Amp Circuit Breaker
1	5652	Square D 60-Amp Circuit Breaker

Replacement Part #		Description
Common Parts for the EH-U**-* (EM-EU***C*) Series		
2	EMDEC5633	HeatChoice II Control Board
3	EM5729	High Limit Probe
4	EM5724	Blower Limit Probe
5	5128C	30-Amp DC Relay
6	5633	118° Auto High Limit
7	EM5620	2.5 kW SpinFin Element

HeatChoice II™

EH-D**-* (EM-ED***C*) Series



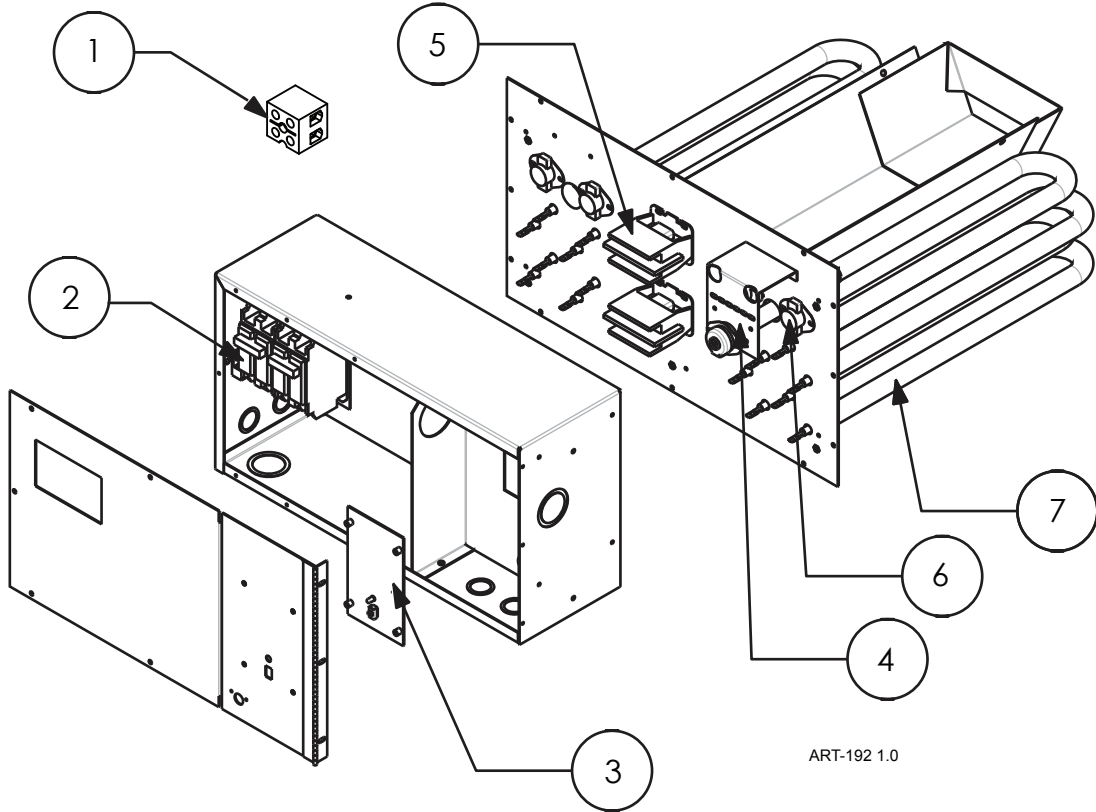
ART-191 2.0

Replacement Part #		Description
<i>EH-D10-5 (EM-ED102C5) / EH-D10-8 (EM-ED102C8)</i>		
1	5652	Square D 60-Amp Circuit Breaker
<i>EH-D15-5 (EM-ED153C5) / EH-D15-8 (EM-ED153C8)</i>		
1	5650	Square D 30-Amp Circuit Breaker
1	5652	Square D 60-Amp Circuit Breaker
<i>EH-D20-5 (EM-ED204C5) / EH-D20-8 (EM-ED204C8)</i>		
1	5652	Square D 60-Amp Circuit Breaker

Replacement Part #		Description
<i>Common Parts for the EH-D**-* (EM-ED***C*) Series</i>		
2	EMDEC5633	HeatChoice II Control Board
3	EM5729	High Limit Probe
4	EM5724	Blower Limit Probe
5	5128C	30-Amp DC Relay
6	5633	118° Auto High Limit
7	EM5620	2.5 kW SpinFin Element
8	EM5714	Down Flow High Limit Probe (<i>Shipped Loose</i>)

HeatChoice™

EH-U**-* (EM-EU***C*) Series



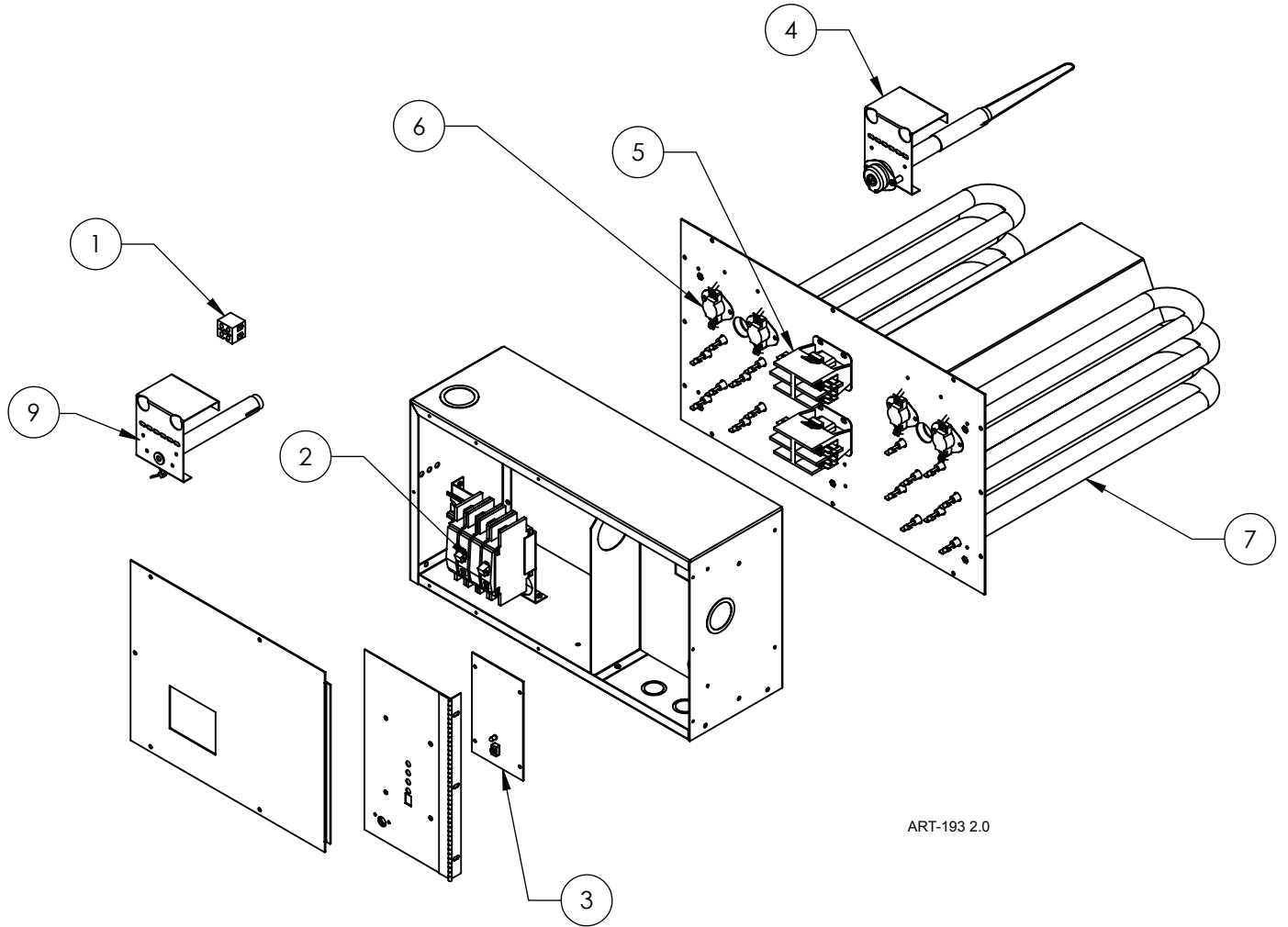
ART-192 1.0

Replacement Part #	Description	
EH-U05-5 (EM-EU051C5) / EH-U05-8 (EM-EU051C8)		
1	6636	Terminal Block
EH-U10-5 (EM-EU101C5) / EH-U10-8 (EM-EU101C8)		
1	6636	Terminal Block
EH-U15-5 (EM-EU152C5) / EH-U15-8 (EM-EU152C8)		
2	5641	GE 45-Amp Circuit Breaker
2	5651	Square D 45-Amp Circuit Breaker
EH-U20-5 (EM-EU202C5) / EH-U20-8 (EM-EU202C8)		
2	5640	GE 60-Amp Circuit Breaker
2	5652	Square D 60-Amp Circuit Breaker

Replacement Part #	Description	
EH-U25-8 (EM-EU253C8)		
2	5639	GE 30-Amp Circuit Breaker
2	5640	GE 60-Amp Circuit Breaker
2	5650	Square D 30-Amp Circuit Breaker
2	5652	Square D 60-Amp Circuit Breaker
Common Parts for the EH-U**-* (EM-EU***C*) Series		
3	EM-HC2-KIT	HeatChoice II Upgrade
4	EM5729	High Limit Probe
5	5126	30-Amp Two Pole Contactor Relay
6	5635	170° Auto High Limit
7	EM5620	2.5 kW SpinFin Element
8	UFUSE0440	2-Amp Fast Blow Fuse (<i>Not Shown</i>)

HeatChoice™

EH-D**-* (EM-ED***C*) Series

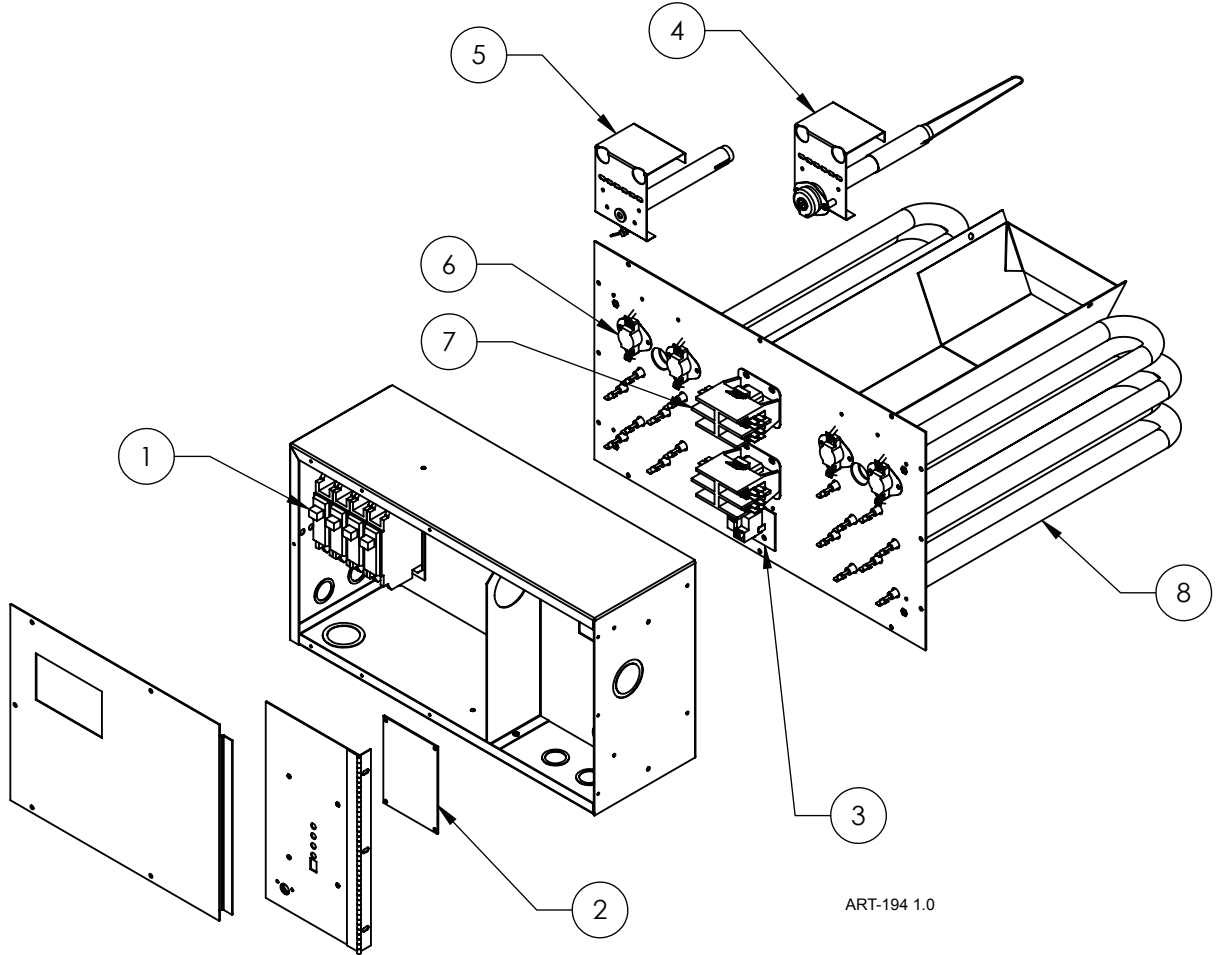


ART-193 2.0

Replacement Part #	Description	
EH-D05-5 (EM-ED051C5) / EH-D05-8 (EM-ED051C8)		
1	6636	Terminal Block
EH-D10-5 (EM-ED101C5) / EH-D10-8 (EM-ED101C8)		
1	6636	Terminal Block
EH-D15-5 (EM-ED152C5) / EH-D15-8 (EM-ED152C8)		
2	5641	GE 45-Amp Circuit Breaker
2	5651	Square D 45-Amp Circuit Breaker
EH-DU20-5 (EM-ED202C5) / EH-D20-8 (EM-ED202C8)		
2	5640	GE 60-Amp Circuit Breaker
2	5652	Square D 60-Amp Circuit Breaker

Replacement Part #	Description	
Common Parts for the EH-D**-* (EM-ED***C*) Series		
3	EM-HC2-KIT	HeatChoice II Upgrade
4	EM5729	High Limit Probe
5	5126	30-Amp Two Pole Contactor Relay
6	5635	170° Auto High Limit
7	EM5620	2.5 kW SpinFin Element
8	UFUSE0440	2-Amp Fast Blow Fuse (<i>Not Shown</i>)
9	EM5714	Down Flow High Limit Probe (<i>Shipped Loose</i>)

Electro-Mate® EM-EU***** Series

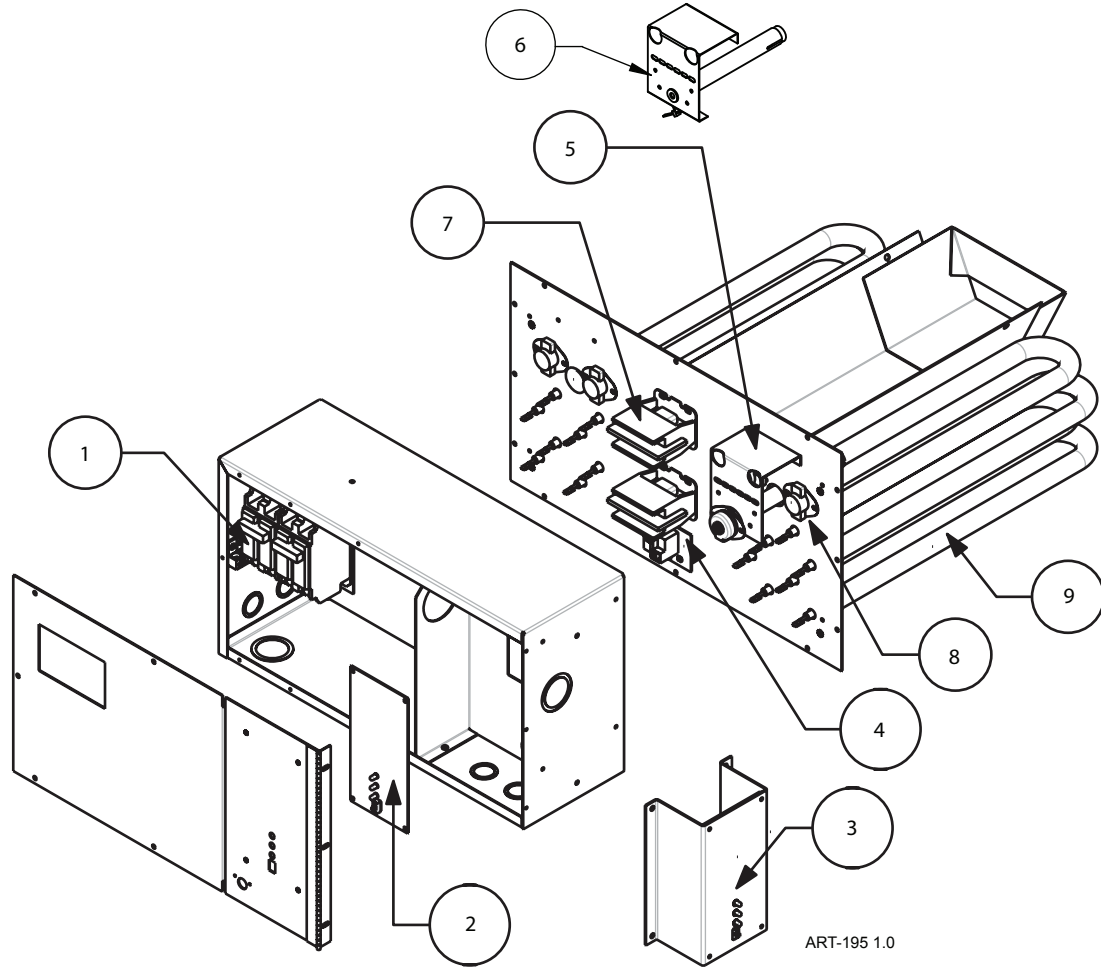


Replacement Part #		Description
EM-EU10115 / EM-EU10118		
1	5640	GE 60-Amp Circuit Breaker
EM-EU15275 / EM-EU15278		
1	5641	GE 45-Amp Circuit Breaker
EM-EU20215 / EM-EU20218		
1	5640	GE 60-Amp Circuit Breaker

Replacement Part #		Description
Common Parts for the EM-EU***** Series		
2	@EMDFE5504	Control Board
3	EM5626-2	Blower Relay Board
4	EM5729	High Limit Probe (For Plenum Heaters Manufactured after 06/2004)
5	EM5724	Blower Limit Probe
6	5635	170° Auto High Limit
7	5126	30-Amp Two Pole Contactor Relay
8	EM5620	2.5 kW SpinFin Element

Electro-Mate®

EM-LV***** and EM-LU***** Series



Replacement Part #	Description
--------------------	-------------

EM-LV10115 / EM-LU10115 / EM-LV10118 / EM-LU10118	
1	5640 GE 60-Amp Circuit Breaker
1	5652 Square D 60-Amp Circuit Breaker

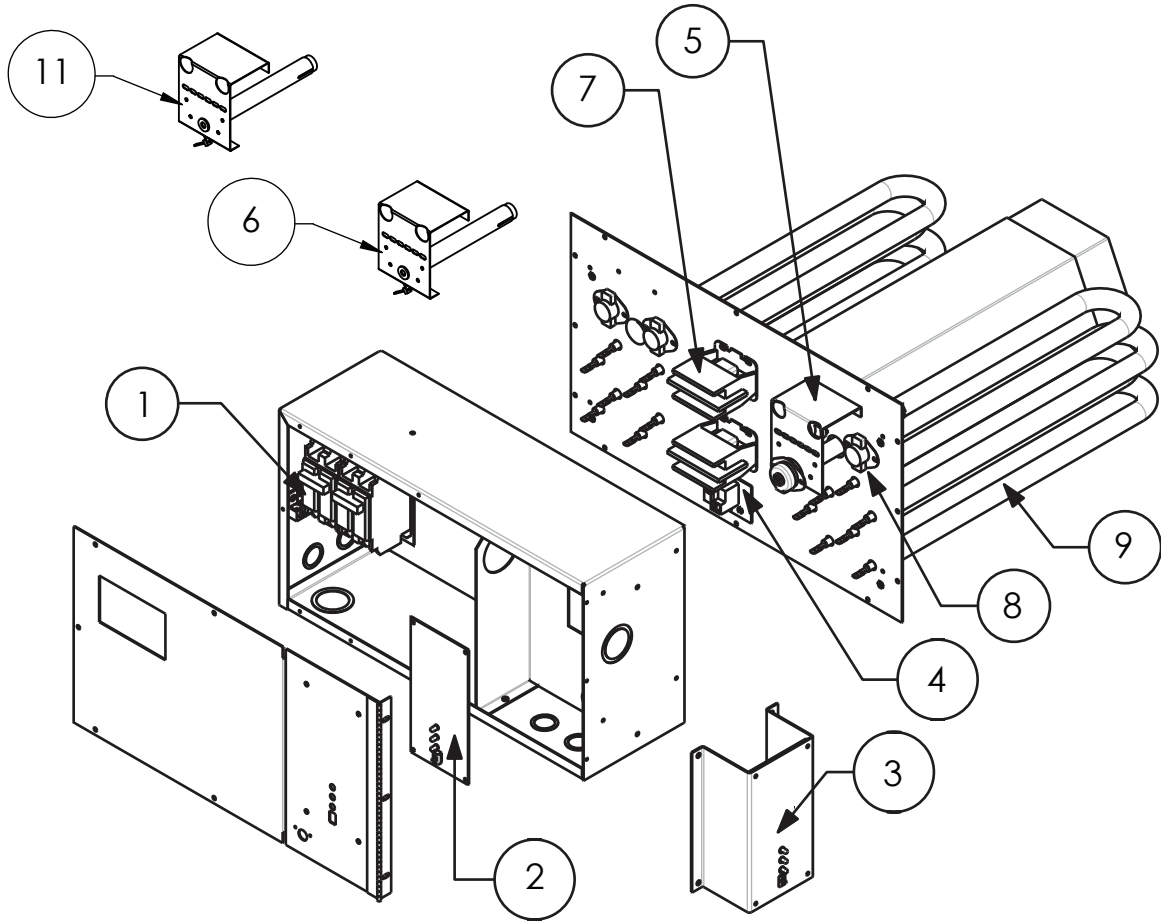
EM-LV15275 / EM-LU15275 / EM-LV15278 / EM-LU15278	
1	5641 GE 45-Amp Circuit Breaker
1	5651 Square D 45-Amp Circuit Breaker

EM-LV20215 / EM-LU20215 / EM-LV20218 / EM-LU20218	
1	5640 GE 60-Amp Circuit Breaker
1	5652 Square D 60-Amp Circuit Breaker

Replacement Part #	Description
--------------------	-------------

Common Parts for the EM-LV***** and EM-LU***** Series	
2	EM5845 Dual Fuel Control (Door Mount)
3	EM5735C Dual Fuel Control (Mounted on Black Bracket)
4	EM5626-2 Blower Relay Board
5	EM5729 High Limit Probe (For Plenum Heaters Manufactured after 11/2001)
6	EM5724 Blower Limit Probe
7	5126 30-Amp Two Pole Contactor Relay
8	5635 170° Auto High Limit
9	EM5620 2.5 kW SpinFin Element
10	UFUSE0440 2-Amp Fast Blow Fuse (Not Shown)

Electro-Mate® EM-LD***** Series

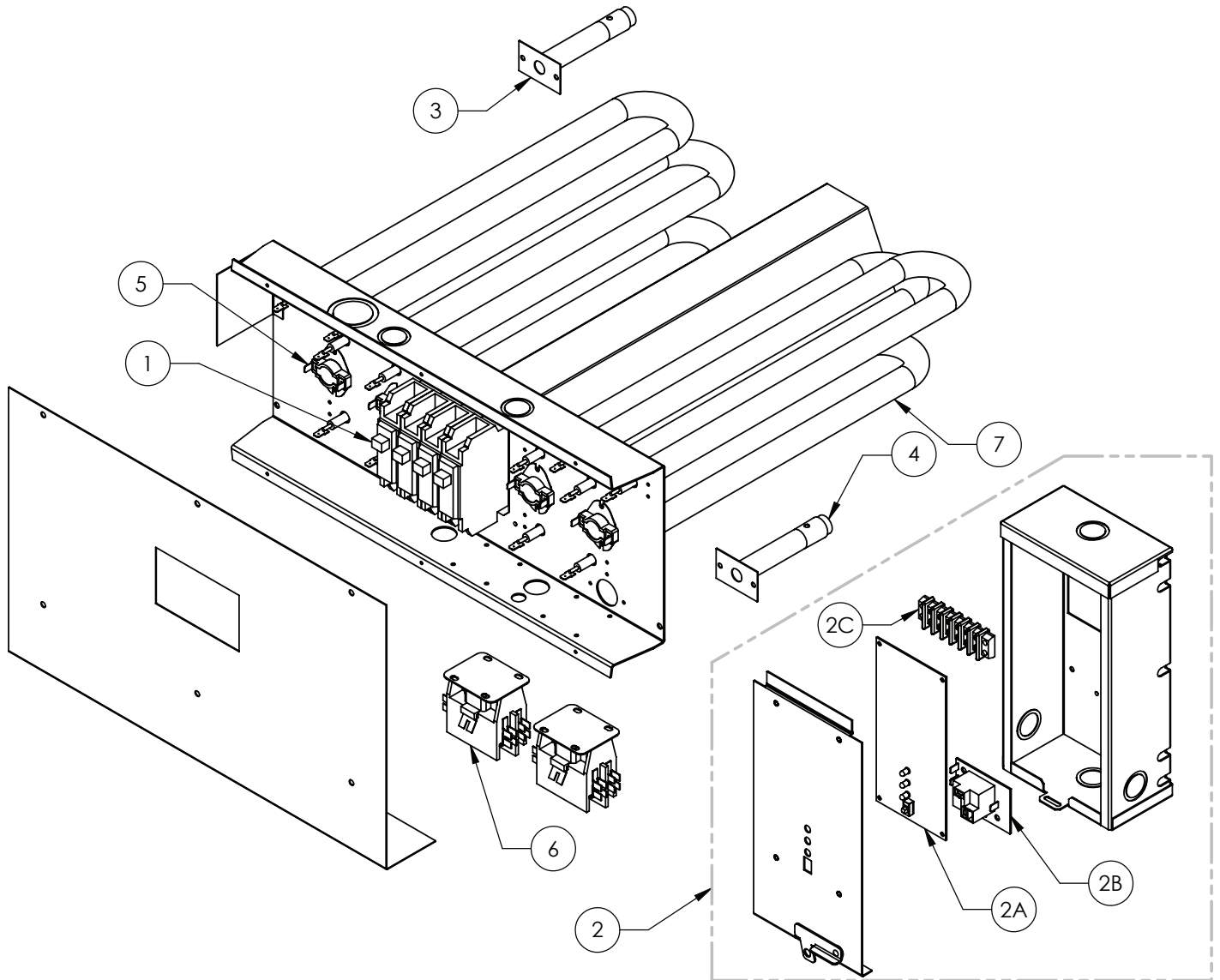


ART-196 2.0

Replacement Part #	Description	
EM-LD10115 / EM-LD10118		
1	5640	GE 60-Amp Circuit Breaker
1	5652	Square D 60-Amp Circuit Breaker
EM-LD15275 / EM-LD15278		
1	5641	GE 45-Amp Circuit Breaker
1	5651	Square D 45-Amp Circuit Breaker
EM-LD20215 / EM-LD20218		
1	5640	GE 60-Amp Circuit Breaker
1	5652	Square D 60-Amp Circuit Breaker

Replacement Part #	Description	
Common Parts for the EM-LD***** Series		
2	EM5845	Dual Fuel Control (Door Mount)
3	EM5735C	Dual Fuel Control (Mounted on Black Bracket)
4	EM5626-2	Blower Relay Board
5	EM5729	High Limit Probe (For Plenum Heaters Manufactured after 11/2001)
6	EM5724	Blower Limit Probe
7	5126	30-Amp Two Pole Contactor Relay
8	5635	170° Auto High Limit
9	EM5620	2.5 kW SpinFin Element
10	UFUSE0440	2-Amp Fast Blow Fuse (<i>Not Shown</i>)
11	EM5714	Down Flow High Limit Probe (<i>Shipped Loose</i>)

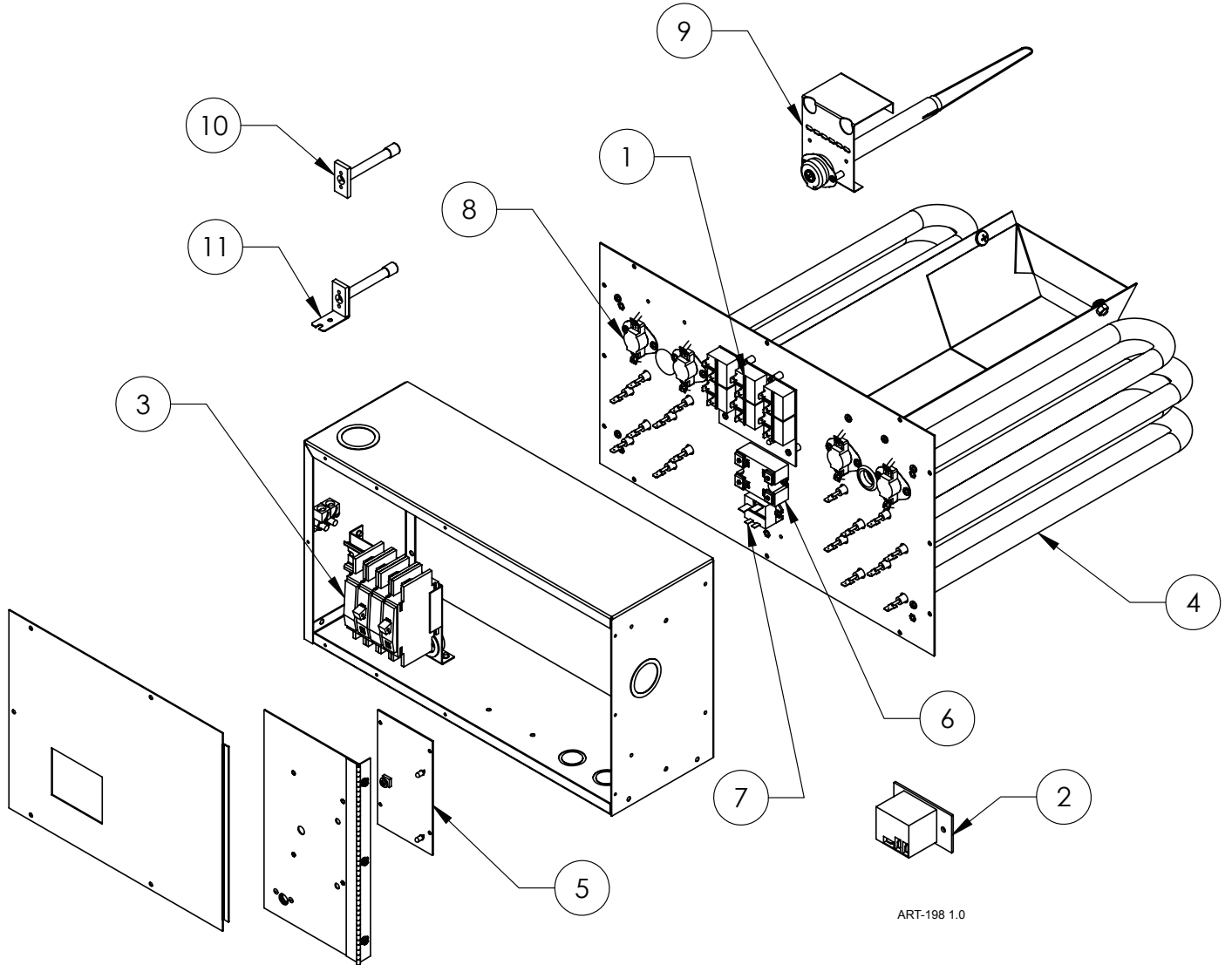
Electro-Mate® Coleman EM-LD****M Series



ART-197 1.0

Replacement Part #		Description
EM-LD1011M		
1	5640	GE 60-Amp Circuit Breaker
EM-LD1527M		
1	5641	GE 45-Amp Circuit Breaker
Common Parts for the EM-LD****M Series		
2	EE-5135-E	Complete Interface Module
2a	EM5835C	Dual Fuel Control
2b	EM5626-2	Blower Relay Board
2c	5961	Terminal Block
3	EM5713	Low Limit Probe
4	5631	205° High Limit
5	5635	170° Auto High Limit
6	5126	30-Amp Two Pole Contactor Relay
7	EM5620	2.5 kW SpinFin Element

Electro-Mate® WarmFlo II® EM-WU***** Series



(SEE NEXT PAGE FOR PARTS LIST)

Electro-Mate® WarmFlo II®

EM-WU***** Series

Replacement Part #	Description	
--------------------	-------------	--

Replacement Part #	Description	
--------------------	-------------	--

EM-WU10255 / EM-WU10258

1	WFRFT5616	Relay Board
3	5640	GE 60-Amp Circuit Breaker
3	5652	Square D 60-Amp Circuit Breaker
4	EM5620	2.5 kW SpinFin Element

EM-WU14358

1	WFRFT5616	Relay Board
3	5670	GE 50-Amp 3 Phase Circuit Breaker
3	5655	Square D 50-Amp 3 Phase Circuit Breaker
4	EM5622	2.5 kW Element - 208 3-Phase

EM-WU15355 / EM-WU15358

1	WFRFT5616	Relay Board
3	5639	GE 30-Amp Circuit Breaker
3	5640	GE 60-Amp Circuit Breaker
3	5650	Square D 30-Amp Circuit Breaker
3	5652	Square D 60-Amp Circuit Breaker
4	EM5620	2.5 kW SpinFin Element

EM-WU20455 / EM-WU20458

1	WFRFT5616	Relay Board
3	5640	GE 60-Amp Circuit Breaker
3	5652	Square D 60-Amp Circuit Breaker
4	EM5620	2.5 kW SpinFin Element

EM-WU22478

1	WFRFT5616	Relay Board
2	5123	Upperstage Relay Board (EMR1B8102B)
3	5671	GE 80-Amp 3 Phase Circuit Breaker
3	5657	Square D 80-Amp 3 Phase Circuit Breaker
4	EM5622	2.5 kW Element - 208 3-Phase

EM-WU25458

1	WFRFT5616	Relay Board
2	5123	Upperstage Relay Board (EMR1B8102B)
3	5639	GE 30-Amp Circuit Breaker
3	5640	GE 60-Amp Circuit Breaker
3	5650	Square D 30-Amp Circuit Breaker
3	5652	Square D 60-Amp Circuit Breaker
4	EM5620	2.5 kW SpinFin Element

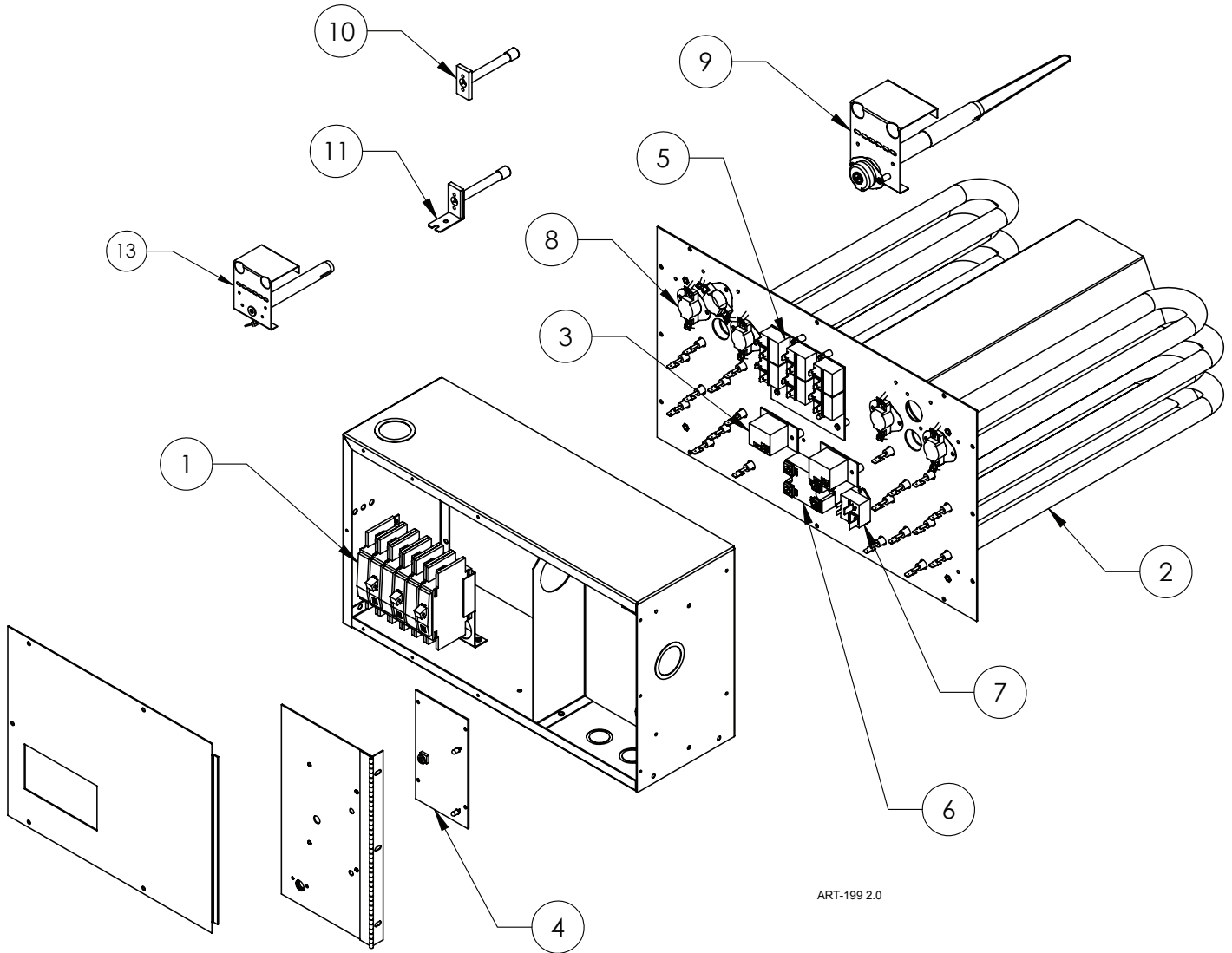
Common Parts for the EM-WU*** Series**

5	WF2FR	WarmFlo II Control Board
6	4037KIT	50-Amp Triac Kit
7	5128C	30-Amp DC Relay
8	5633	118° Auto High Limit
9	EM5729	High Limit Probe
10	WFSSF	Duct Sensor (For Plenum Heaters Manufactured before 07/2004)
10	WFS5F	Duct Sensor (For Plenum Heaters Manufactured after 07/2004)
11	WFSOF	Outdoor Sensor (For Plenum Heaters Manufactured before 07/2004)
11	WFS25F	Outdoor Sensor (For Plenum Heaters Manufactured after 07/2004)
12	UFUSE0440	2-Amp Fast Blow Fuse (<i>Not Shown</i>)

Interfaces

13	WF-LGR4	Heat Pump Thermostat Interface
13a	WF6708LGR4	Control Board for WF-LGR4
15	WF-EZ3	Heat Pump 4-wire Thermostat Interface
15a	WF6704EZ3	Control Board for WF-EZ3
16	WF-HP2	Two Speed Heat Pump Interface
16a	HP26706	Control Board for WF-HP2
17	WF-HE	Evolution™ and Infinity™ WarmFlo Interface
18	WF-EM3	Non-Heat Pump Interface
18a	WF6704EM3	Control Board for WF-EM3

Electro-Mate® WarmFlo II® EM-WD***** Series



ART-199 2.0

(SEE NEXT PAGE FOR PARTS LIST)

Electro-Mate® WarmFlo II®

EM-WD***** Series

Replacement Part #	Description
--------------------	-------------

Replacement Part #	Description
--------------------	-------------

EM-WD10255 / EM-WD10258		
1	5640	GE 60-Amp Circuit Breaker
1	5652	Square D 60-Amp Circuit Breaker
2	EM5620	2.5 kW SpinFin Element

Common Parts for the EM-WD***** Series		
4	WF2FR	WarmFlo II Control Board
5	WFRFT5616	Relay Board
6	4037KIT	50-Amp Triac Kit
7	5128C	30-Amp DC Relay
8	5633	118° Auto High Limit
9	EM5729	High Limit Probe
10	WFSSF	Duct Sensor (For Plenum Heaters Manufactured before 07/2004)
10	WFS5F	Duct Sensor (For Plenum Heaters Manufactured after 07/2004)
11	WFSOF	Outdoor Sensor (For Plenum Heaters Manufactured before 07/2004)
11	WFS25F	Outdoor Sensor (For Plenum Heaters Manufactured after 07/2004)
12	UFUSE0440	2-Amp Fast Blow Fuse (<i>Not Shown</i>)
13	EM5714	Down Flow High Limit Probe (<i>Shipped Loose</i>)

EM-WD14358		
1	5670	GE 50-Amp 3 Phase Circuit Breaker
1	5655	Square D 50-Amp 3 Phase Circuit Breaker
2	EM5622	2.5 kW Element - 208 3-Phase

EM-WD15355 / EM-WD15358		
1	5639	GE 30-Amp Circuit Breaker
1	5640	GE 60-Amp Circuit Breaker
1	5650	Square D 30-Amp Circuit Breaker
1	5652	Square D 60-Amp Circuit Breaker
2	EM5620	2.5 kW SpinFin Element

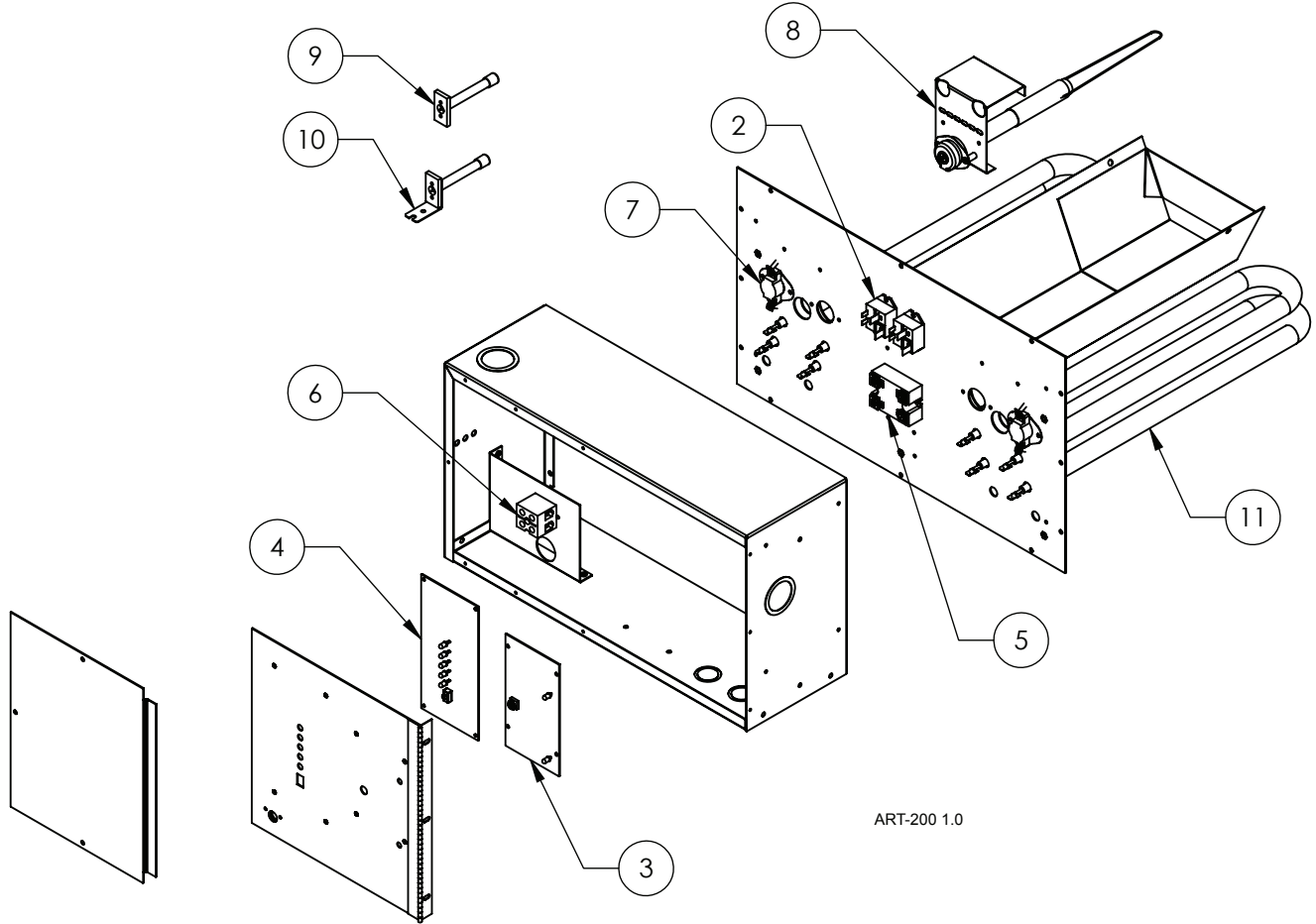
Interfaces		
14	WF-LGR4	Heat Pump Thermostat Interface
14a	WF6708LGR4	Control Board for WF-LGR4
16	WF-EZ3	Heat Pump 4-wire Thermostat Interface
16a	WF6704EZ3	Control Board for WF-EZ3
17	WF-HP2	Two Speed Heat Pump Interface
17b	HP26706	Control Board for WF-HP2
18	WF-HE	Evolution™ and Infinity™ WarmFlo Interface
19	WF-EM3	Non-Heat Pump Interface
19a	WF6704EM3	Control Board for WF-EM3

EM-WD20455 / EM-WD20458		
1	5640	GE 60-Amp Circuit Breaker
1	5652	Square D 60-Amp Circuit Breaker
2	EM5620	2.5 kW SpinFin Element

EM-WD22478		
1	5671	GE 80-Amp 3 Phase Circuit Breaker
1	5657	Square D 80-Amp 3 Phase Circuit Breaker
2	EM5622	2.5 kW Element - 208 3-Phase
3	5123	Upperstage Relay Board (EMR1B8102B)

EM-WD25458		
1	5639	GE 30-Amp Circuit Breaker
1	5640	GE 60-Amp Circuit Breaker
1	5650	Square D 30-Amp Circuit Breaker
1	5652	Square D 60-Amp Circuit Breaker
2	EM5620	2.5 kW SpinFin Element
3	5123	Upperstage Relay Board (EMR1B8102B)

Electro-Mate® WarmFlo II® EM-WU***H* Series

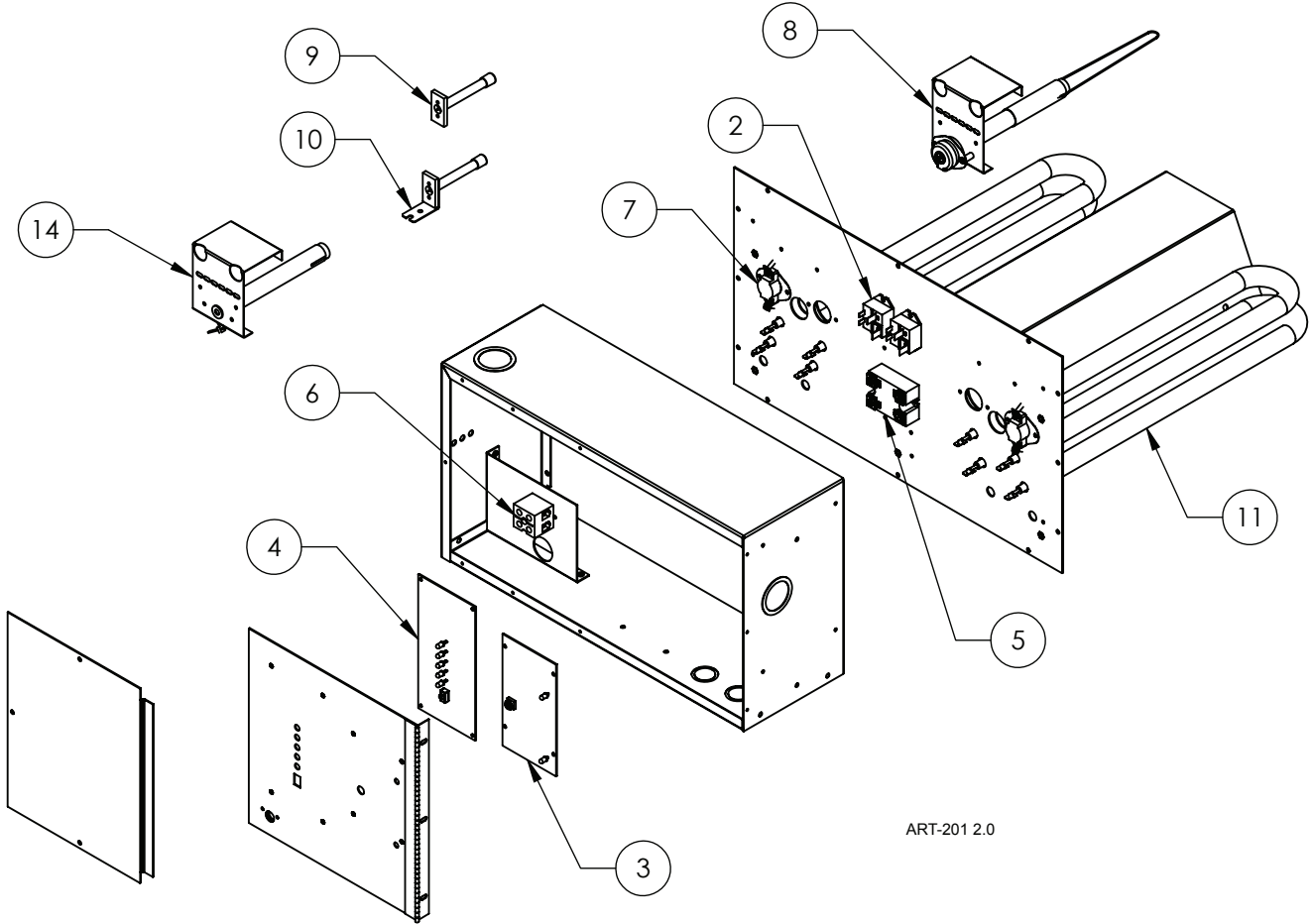


ART-200 1.0

Replacement Part #	Description
EM-WU051H5 / EM-WU051H8	
See Common Parts	
EM-WU102H5 / EM-WU102H8	
2	5128C 30-Amp DC Relay

Replacement Part #	Description
Common Parts for the EM-WU***H* Series	
3	WF2FR WarmFlo II Control Board
4	WF6704EZ3 Control Board for Interface
5	4038KIT 50-Amp Triac Kit
6	6636 Terminal block
7	5633 118° Auto High Limit
8	EM5729 High Limit Probe
9	WFSSF Duct Sensor (For Plenum Heaters Manufactured before 07/2004)
9	WFS5F Duct Sensor (For Plenum Heaters Manufactured after 07/2004)
10	WFSOF Outdoor Sensor (For Plenum Heaters Manufactured before 07/2004)
10	WFS25F Outdoor Sensor (For Plenum Heaters Manufactured after 07/2004)
11	EM5620 2.5 kW SpinFin Element
13	UFUSE0440 2-Amp Fast Blow Fuse (Not Shown)

Electro-Mate® WarmFlo II® EM-WD***H* Series

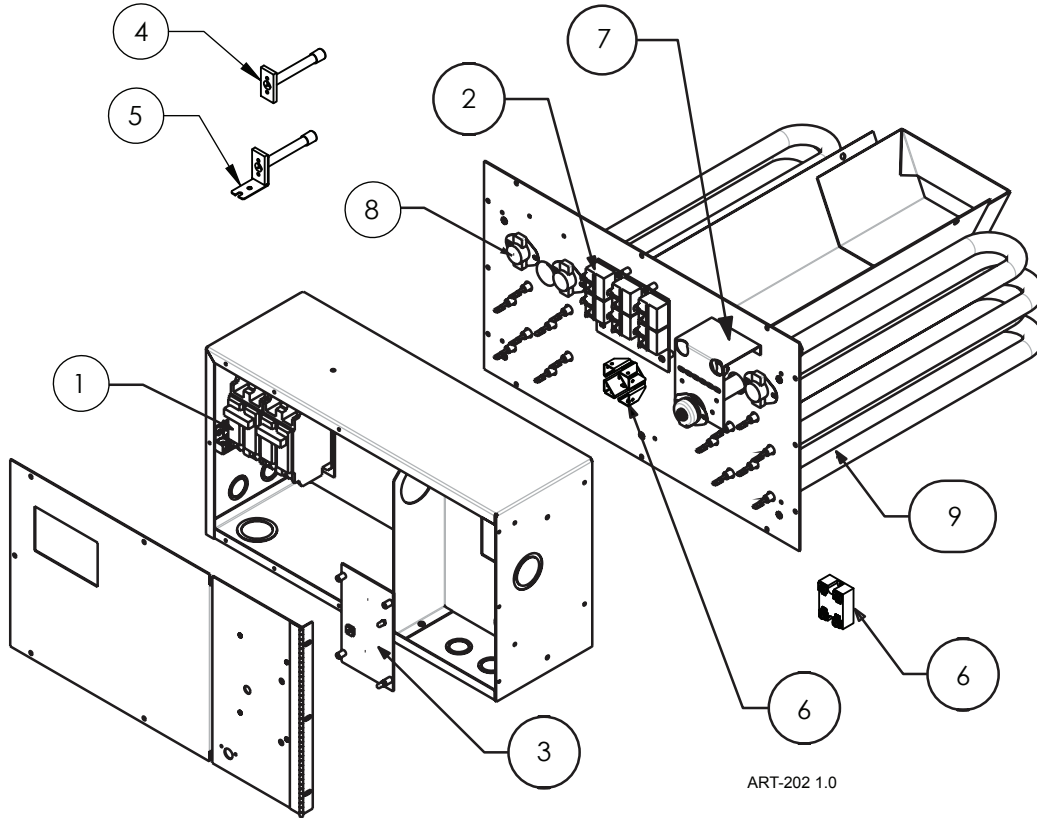


ART-201 2.0

Replacement Part #	Description
EM-WD051H5 / EM-WD051H8	
	See Common Parts
EM-WD102H5 / EM-WD102H8	
2	5128C 30-Amp DC Relay

Replacement Part #	Description
Common Parts for the EM-WD***H* Series	
3	WF2FR WarmFlo II Control Board
4	WF6704EZ3 Control Board for Interface
5	4038KIT 50-Amp Triac Kit
6	6636 Terminal block
7	5633 118° Auto High Limit
8	EM5729 High Limit Probe
9	WFSSF Duct Sensor (For Plenum Heaters Manufactured before 07/2004)
9	WFS5F Duct Sensor (For Plenum Heaters Manufactured after 07/2004)
10	WFSOF Outdoor Sensor (For Plenum Heaters Manufactured before 07/2004)
10	WFS25F Outdoor Sensor (For Plenum Heaters Manufactured after 07/2004)
11	EM5620 2.5 kW SpinFin Element
12	UFUSE0440 2-Amp Fast Blow Fuse (<i>Not Shown</i>)
13	EM5714 Down Flow High Limit Probe (<i>Shipped Loose</i>)

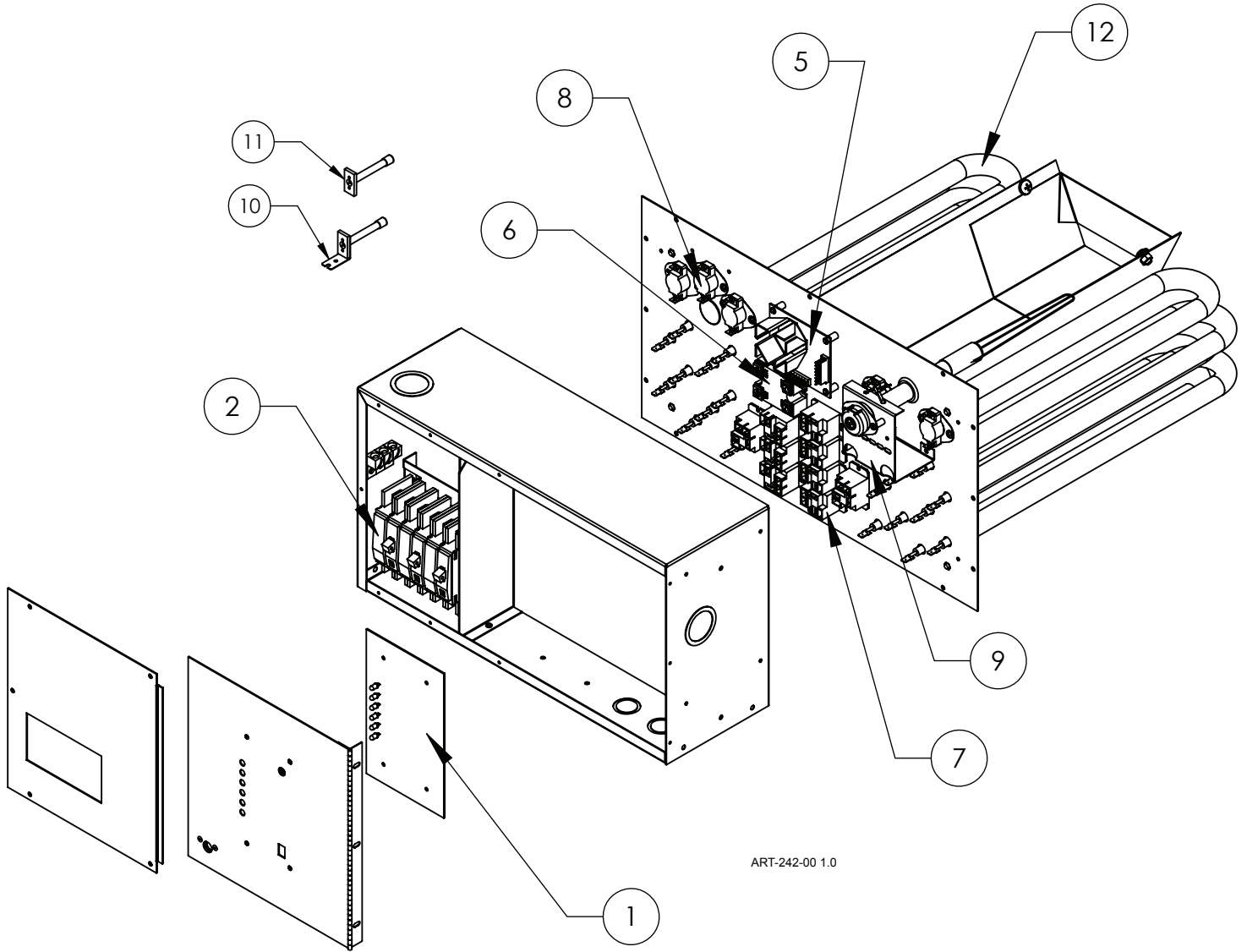
Electro-Mate® WarmFlo® EM-WV***** Series



Replacement Part #		Description
EM-WV15355 / EM-WV15358		
1	5639	GE 30-Amp Circuit Breaker
1	5640	GE 60-Amp Circuit Breaker
EM-WV20355 / EM-WV20358		
1	5640	GE 60-Amp Circuit Breaker

Replacement Part #		Description
Common Parts for the EM-WV***** Series		
2	WFR6T5616	Relay Board, 3-Stage
3	WF2BK	WarmFlo II Control Board
4	WFSSF	Duct Sensor
5	WFSOF	Outdoor Sensor
6	WF4037 (4036)	4036 Replacement Kit (30-Amp Triac)
7	EM5729	High Limit Probe
8	5633	118° Auto High Limit
9	EM5620	2.5 kW SpinFin Element

WarmFlo® Select EM-WU*****-SL* Series



(SEE NEXT PAGE FOR PARTS LIST)

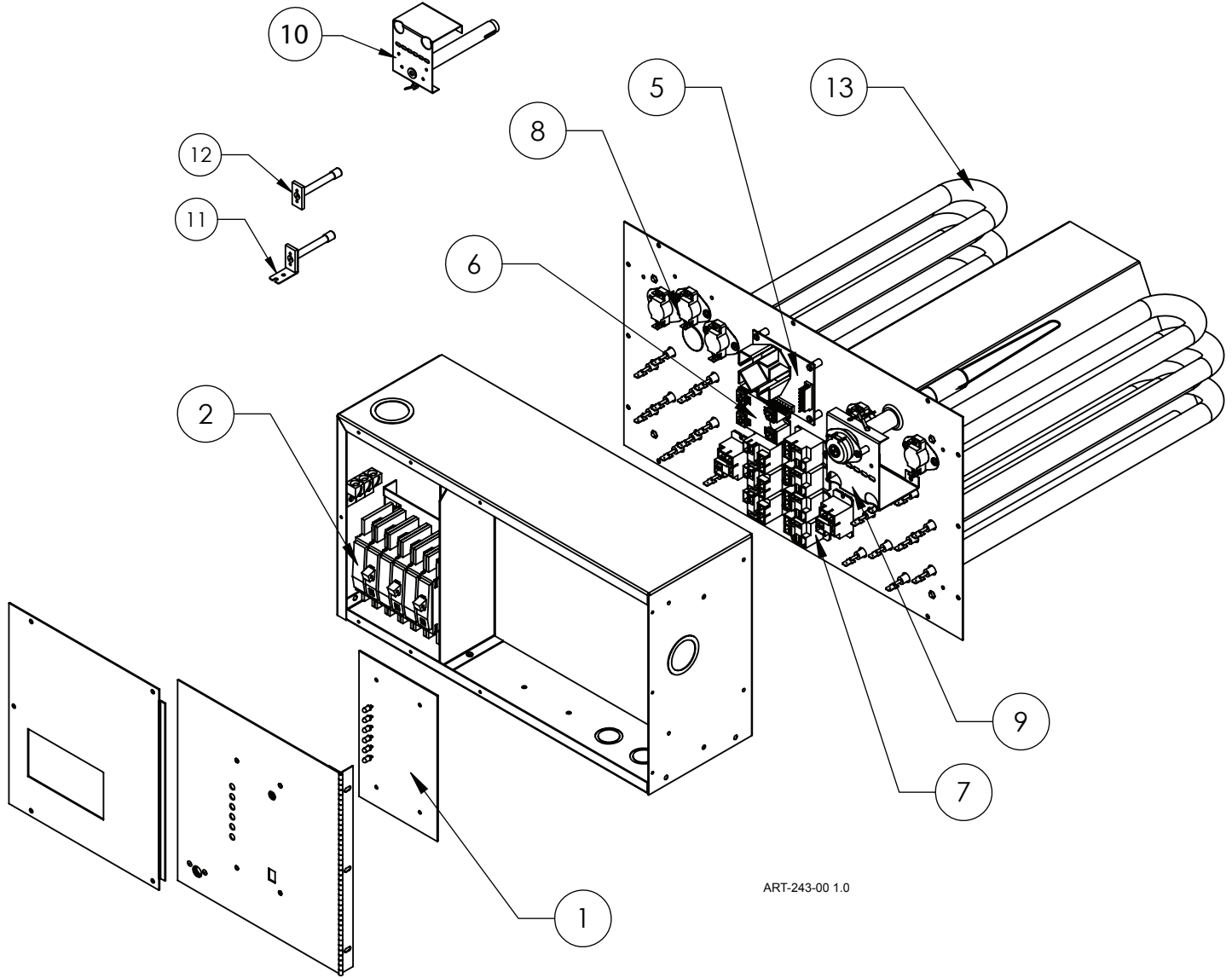
WarmFlo® Select

EM-WU*****-SL* Series

Replacement Part #		Description
EM-WU102S5-SL1 / EM-WU102S8-SL1		
1	WF5665SL1	WarmFlo + Control Board
2	5652	Square D 60-Amp Circuit Breaker
EM-WU153S5-SL1 / EM-WU153S8-SL1		
1	WF5665SL1	WarmFlo + Control Board
2	5650	Square D 30-Amp Circuit Breaker
2	5652	Square D 60-Amp Circuit Breaker
EM-WU204S5-SL1 / EM-WU204S8-SL1		
1	WF5665SL1	WarmFlo + Control Board
2	5652	Square D 60-Amp Circuit Breaker
EM-WU254S8-SL1		
1	WF5665SL1	WarmFlo + Control Board
2	5650	Square D 30-Amp Circuit Breaker
2	5652	Square D 60-Amp Circuit Breaker
EM-WU102D5-SL2 / EM-WU102D8-SL2		
1	WF5666SL2	WarmFlo SL2 Control Board
2	5652	Square D 60-Amp Circuit Breaker
EM-WU153D5-SL2 / EM-WU153D8-SL2		
1	WF5666SL2	WarmFlo SL2 Control Board
2	5650	Square D 30-Amp Circuit Breaker
2	5652	Square D 60-Amp Circuit Breaker
EM-WU204D5-SL2 / EM-WU204D8-SL2		
1	WF5666SL2	WarmFlo SL2 Control Board
2	5652	Square D 60-Amp Circuit Breaker
EM-WU254D8-SL2		
1	WF5666SL2	WarmFlo SL2 Control Board
2	5650	Square D 30-Amp Circuit Breaker
2	5652	Square D 60-Amp Circuit Breaker

Replacement Part #		Description
EM-WU102D5-SLC / EM-WU102D8-SLC		
1	WF5641SLT	WarmFlo SLC Control Board
1a	UIC9266 R-	Microchip v. 17.0*
2	5652	Square D 60-Amp Circuit Breaker
EM-WU153D5-SLC / EM-WU153D8-SLC		
1	WF5641SLT	WarmFlo SLC Control Board
1a	UIC9266 R-	Microchip v. 17.0*
2	5650	Square D 30-Amp Circuit Breaker
2	5652	Square D 60-Amp Circuit Breaker
EM-WU204D5-SLC / EM-WU204D8-SLC		
1	WF5641SLT	WarmFlo SLC Control Board
1a	UIC9266 R-	Microchip v. 17.0*
2	5652	Square D 60-Amp Circuit Breaker
EM-WU254D8-SLC		
1	WF5641SLT	WarmFlo SLC Control Board
1a	UIC9266 R-	Microchip v. 17.0*
2	5650	Square D 30-Amp Circuit Breaker
2	5652	Square D 60-Amp Circuit Breaker
EM-WU102D5-SLT / EM-WU102D8-SLT		
1	WF5641SLT	WarmFlo SLT Control Board
1a	UIC9266 R-130	Microchip v. 17.3*
2	5652	Square D 60-Amp Circuit Breaker
EM-WU153D5-SLT / EM-WU153D8-SLT		
1	WF5641SLT	WarmFlo SLT Control Board
1a	UIC9266 R-130	Microchip v. 17.3*
2	5650	Square D 30-Amp Circuit Breaker
2	5652	Square D 60-Amp Circuit Breaker
EM-WU204D5-SLT / EM-WU204D8-SLT		
1	WF5641SLT	WarmFlo SLT Control Board
1a	UIC9266 R-130	Microchip v. 17.3*
2	5652	Square D 60-Amp Circuit Breaker
Common Parts for the EM-WU*****-SLT Series		
13	EM5642	SLT I/F (Not Shown)
Common Parts for the EM-WU*****-SL* Series		
5	WFPDC5632	Relay Driver Board
6	4038KIT	50-Amp Triac Kit
7	5128C	30-Amp DC Relay
8	5633	118° Auto High Limit
9	EM5729	High Limit Probe
10	WFS25F	Outdoor Sensor
11	WFS5F	Duct Sensor
12	EM5620	2.5 kW SpinFin Element

WarmFlo® Select EM-WD*****-SL* Series



ART-243-00 1.0

(SEE NEXT PAGE FOR PARTS LIST)

WarmFlo® Select

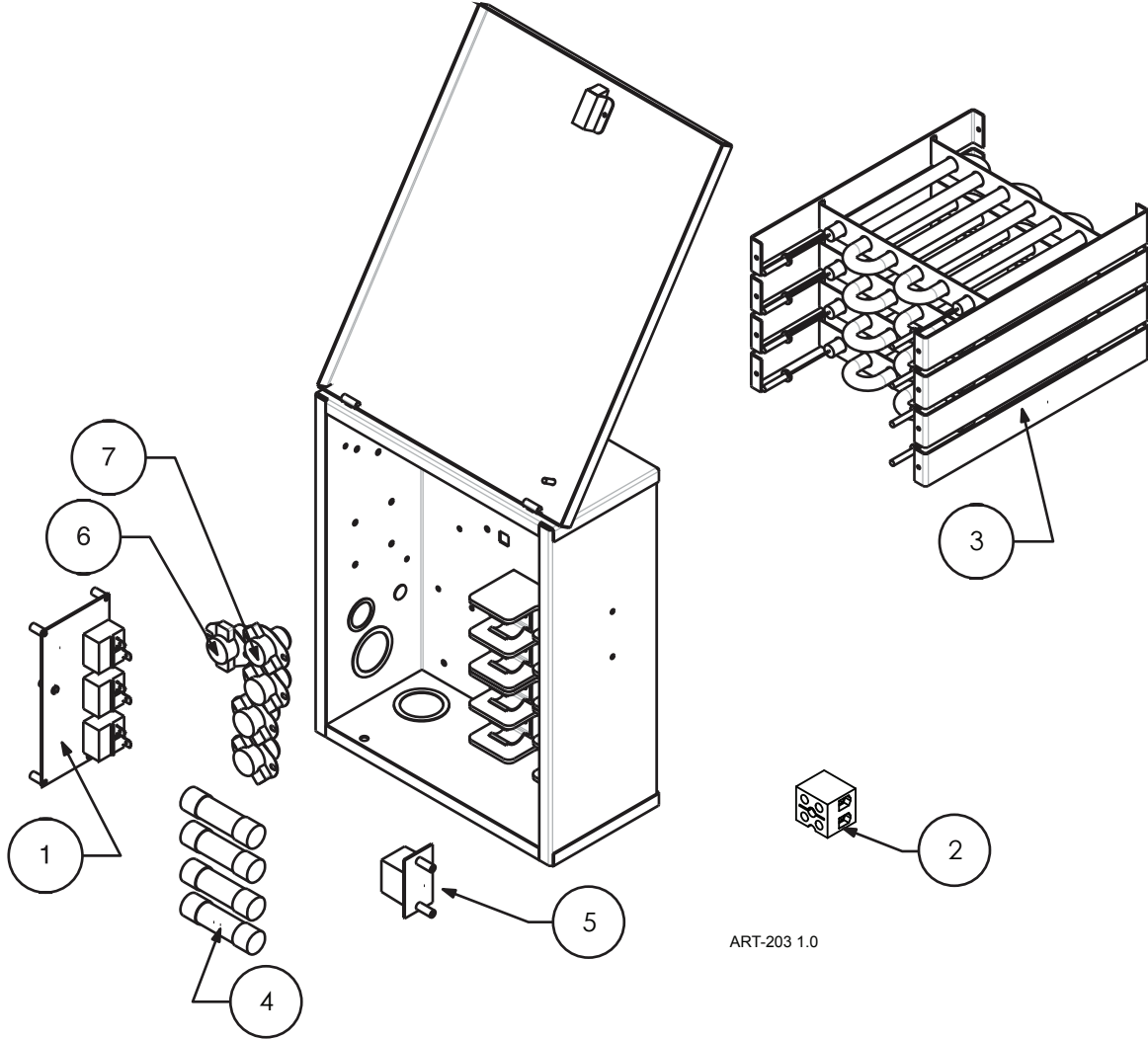
EM-WD****-SL* Series

Replacement Part #		Description
EM-WD102S5-SL1 / EM-WD102S8-SL1		
1	WF5665SL1	WarmFlo + Control Board
2	5652	Square D 60-Amp Circuit Breaker
EM-WD153S5-SL1 / EM-WD153S8-SL1		
1	WF5665SL1	WarmFlo + Control Board
2	5650	Square D 30-Amp Circuit Breaker
2	5652	Square D 60-Amp Circuit Breaker
EM-WD204S5-SL1 / EM-WD204S8-SL1		
1	WF5665SL1	WarmFlo + Control Board
2	5652	Square D 60-Amp Circuit Breaker
EM-WD254S8-SL1		
1	WF5665SL1	WarmFlo + Control Board
2	5650	Square D 30-Amp Circuit Breaker
2	5652	Square D 60-Amp Circuit Breaker
EM-WD102D5-SL2 / EM-WD102D8-SL2		
1	WF5666SL2	WarmFlo SL2 Control Board
2	5652	Square D 60-Amp Circuit Breaker
EM-WD153D5-SL2 / EM-WD153D8-SL2		
1	WF5666SL2	WarmFlo SL2 Control Board
2	5650	Square D 30-Amp Circuit Breaker
2	5652	Square D 60-Amp Circuit Breaker
EM-WD204D5-SL2 / EM-WD204D8-SL2		
1	WF5666SL2	WarmFlo SL2 Control Board
2	5652	Square D 60-Amp Circuit Breaker
EM-WD254D8-SL2		
1	WF5666SL2	WarmFlo SL2 Control Board
2	5650	Square D 30-Amp Circuit Breaker
2	5652	Square D 60-Amp Circuit Breaker

Replacement Part #		Description
EM-WD102D5-SLC / EM-WD102D8-SLC		
1	WF5641SLT	WarmFlo SLC Control Board
1a	UIC9266 R-	Microchip v. 17.0*
2	5652	Square D 60-Amp Circuit Breaker
EM-WD153D5-SLC / EM-WD153D8-SLC		
1	WF5641SLT	WarmFlo SLC Control Board
1a	UIC9266 R-	Microchip v. 17.0*
2	5650	Square D 30-Amp Circuit Breaker
2	5652	Square D 60-Amp Circuit Breaker
EM-WD204D5-SLC / EM-WD204D8-SLC		
1	WF5641SLT	WarmFlo SLC Control Board
1a	UIC9266 R-	Microchip v. 17.0*
2	5652	Square D 60-Amp Circuit Breaker
EM-WD254D8-SLC		
1	WF5641SLT	WarmFlo SLC Control Board
1a	UIC9266 R-	Microchip v. 17.0*
2	5650	Square D 30-Amp Circuit Breaker
2	5652	Square D 60-Amp Circuit Breaker
EM-WD102D5-SLT / EM-WD102D8-SLT		
1	WF5641SLT	WarmFlo SLT Control Board
1a	UIC9266 R-130	Microchip v. 17.3*
2	5652	Square D 60-Amp Circuit Breaker
EM-WD153D5-SLT / EM-WD153D8-SLT		
1	WF5641SLT	WarmFlo SLT Control Board
1a	UIC9266 R-130	Microchip v. 17.3*
2	5650	Square D 30-Amp Circuit Breaker
2	5652	Square D 60-Amp Circuit Breaker
EM-WD204D5-SLT / EM-WD204D8-SLT		
1	WF5641SLT	WarmFlo SLT Control Board
1a	UIC9266 R-130	Microchip v. 17.3*
2	5652	Square D 60-Amp Circuit Breaker
Common Parts for the EM-WD****-SLT Series		
13	EM5642	SLT I/F (Not Shown)
Common Parts for the EM-WD****-SL* Series		
5	WFPDC5632	Relay Driver Board
6	4038KIT	50-Amp Triac Kit
7	5128C	30-Amp DC Relay
8	5633	118° Auto High Limit
9	EM5729	High Limit Probe
10	EM5714	Blower Limit Probe
11	WFS25F	Outdoor Sensor
12	WFS5F	Duct Sensor
13	EM5620	2.5 kW SpinFin Element

Basic Element Duct Heater

EM-DI***** Series



ART-203 1.0

Replacement Part #	Description	
--------------------	-------------	--

<i>EM-DI1025C / EM-DI1025L</i>		
1	EMD2I6600	Control Board 2-Stage
2	6636	Terminal Block
3	EM6617	4.8 kW Element 240V – 16"

<i>EM-DI1025H</i>		
1	EMD2I6600	Control Board 2-Stage
2	6636	Terminal Block
3	EM6615	4.8 kW Element 240V – 10"

<i>EM-DI1535C / EM-DI1535L</i>		
1	EMD3I6600	Control Board 3-Stage
3	EM6617	4.8 kW Element 240V – 16"
4	UFUSE6640	50-Amp Fuse
4	UFUSE5141	30-Amp Fuse

<i>EM-DI1535H</i>		
1	EMD3I6600	Control Board 3-Stage
3	EM6615	4.8 kW Element 240V – 10"
4	UFUSE6640	50-Amp Fuse
4	UFUSE5141	30-Amp Fuse

Replacement Part #	Description	
--------------------	-------------	--

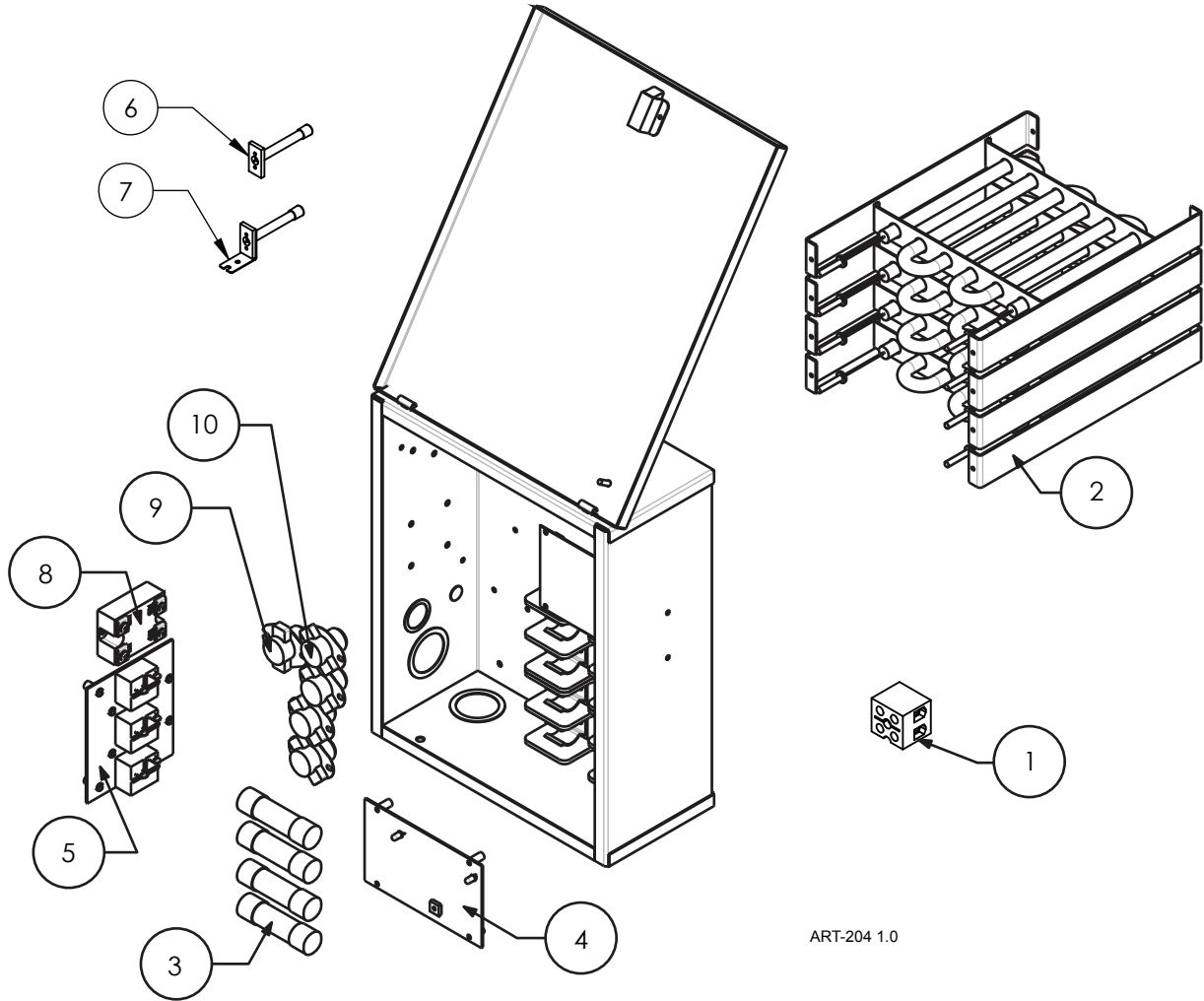
<i>EM-DI2035C / EM-DI2035L</i>		
1	EMD3I6600	Control Board 3-Stage
3	EM6617	4.8 kW Element 240V – 16"
4	UFUSE6640	50-Amp Fuse
5	5123	Relay Board, 20 kW only (EMR1B8102B)

<i>EM-DI2035H</i>		
1	EMD3I6600	Control Board 3-Stage
3	EM6615	4.8 kW Element 240V – 10"
4	UFUSE6640	50-Amp Fuse
5	5123	Relay Board, 20 kW only (EMR1B8102B)

<i>Common Parts for the EM-DI*****</i>		
6	5636	135° High Limit
7	6630	150° High Limit

WarmFlo® Controlled Duct Heater

EM-WE***** Series



ART-204 1.0

Replacement Part #	Description
--------------------	-------------

EM-WE1025C / EM-WE1025L	
1	6636 Terminal Block
2	EM6617 4.8 kW Element – 16"

EM-WE1025H	
1	6636 Terminal Block
2	EM6615 4.8 kW Element – 10"

EM-WE1535C / EM-WE1535L	
2	EM6617 4.8 kW Element – 16"
3	UFUSE6640 50-Amp Fuse
3	UFUSE5141 30-Amp Fuse

EM-WE1535H	
2	EM6615 4.8 kW Element – 10"
3	UFUSE6640 50-Amp Fuse
3	UFUSE5141 30-Amp Fuse

EM-WE2035C / EM-WE2035L	
2	EM6617 4.8 kW Element – 16"
3	UFUSE6640 50-Amp Fuse

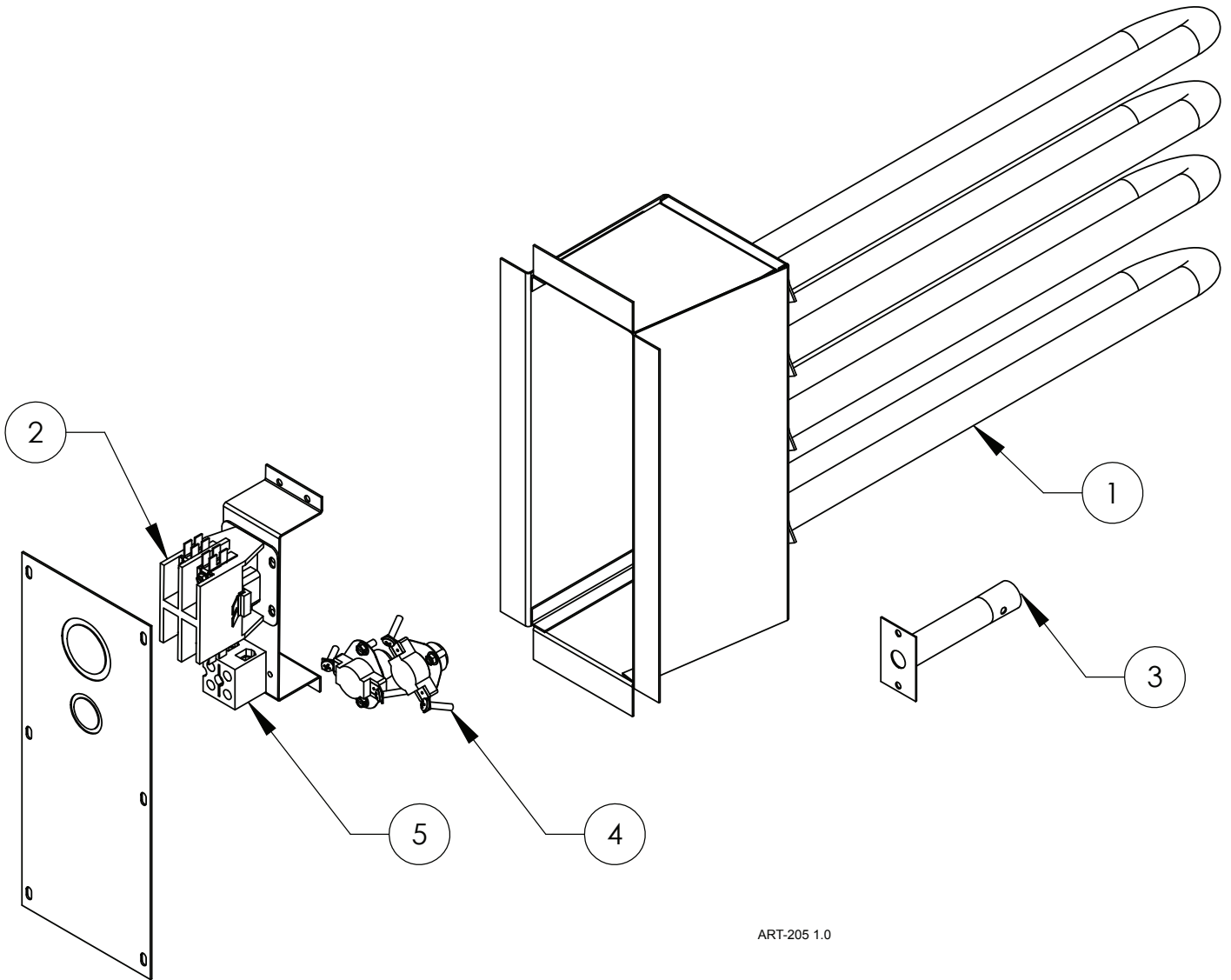
Replacement Part #	Description
--------------------	-------------

EM-WE2035H	
2	EM6615 4.8 kW Element – 10"
3	UFUSE6640 50-Amp Fuse

Common Parts for the EM-WE*****	
4	WF2BK WarmFlo II Control Board
5	WFR3T5616 Relay Board
6	WFS5F Duct Sensor (For Heaters Manufactured After 7/2004)
6	WFSSF Duct Sensor (For Heaters Manufactured Before 7/2004)
7	WFS25F Outdoor Sensor (For Heaters Manufactured After 7/2004)
7	WFSOF Outdoor Sensor (For Heaters Manufactured Before 7/2004)
8	4037KIT 50-Amp Triac
9	5636 135° High Limit
10	6630 150° High Limit

Custom Duct Heater

EM-II05154 and EM-II10114

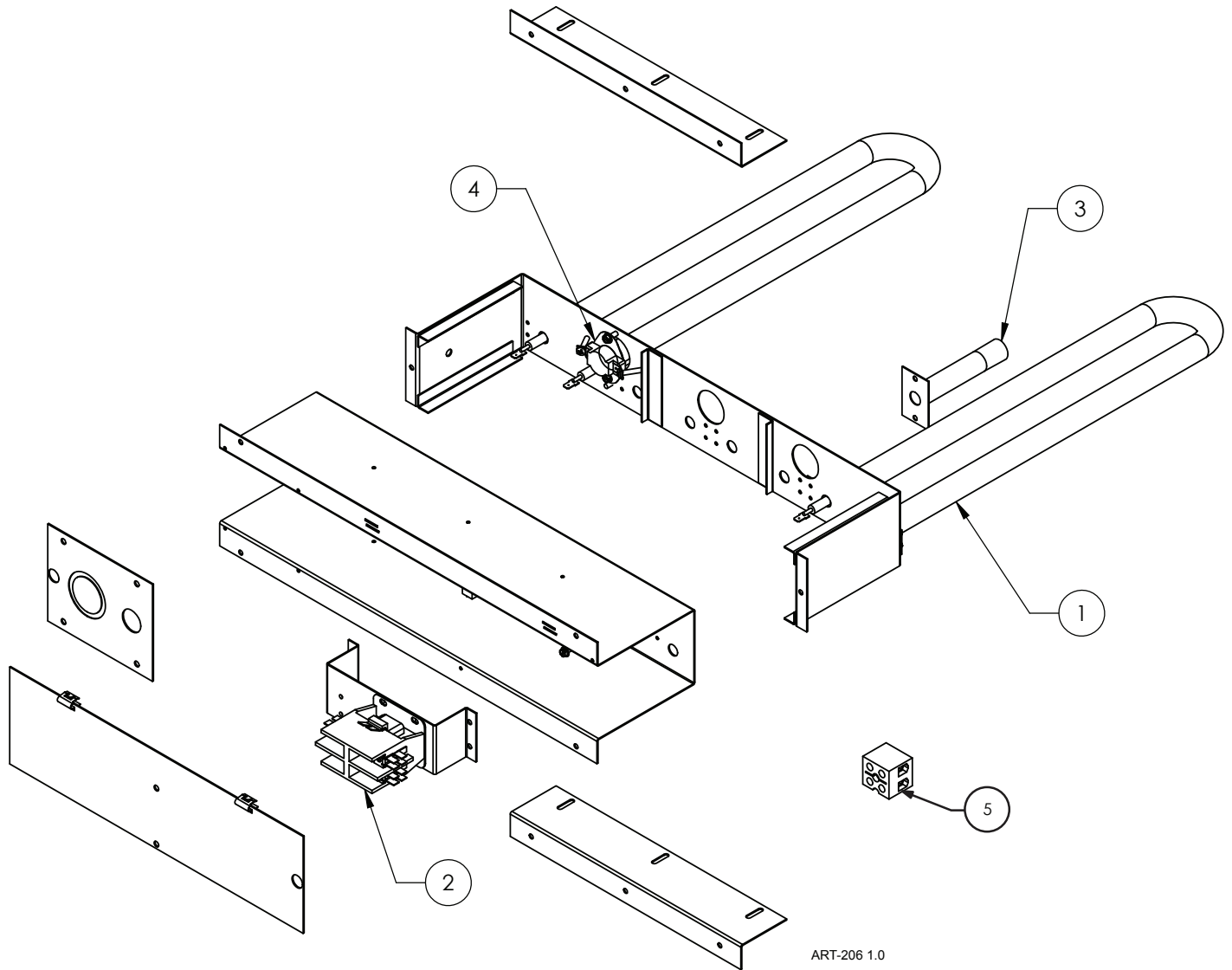


ART-205 1.0

Replacement Part #	Description	
EM-II05154 / EM-II10114		
1	EM5620	2.5 kW SpinFin Element
2	5126	30-Amp Two Pole Contactor Relay
3	5625	180° High Limit Probe Sensor
4	5635	170° Auto High Limit
5	6636	Terminal Block

Custom Duct Heater

EM-II05158 and EM-II10118



ART-206 1.0

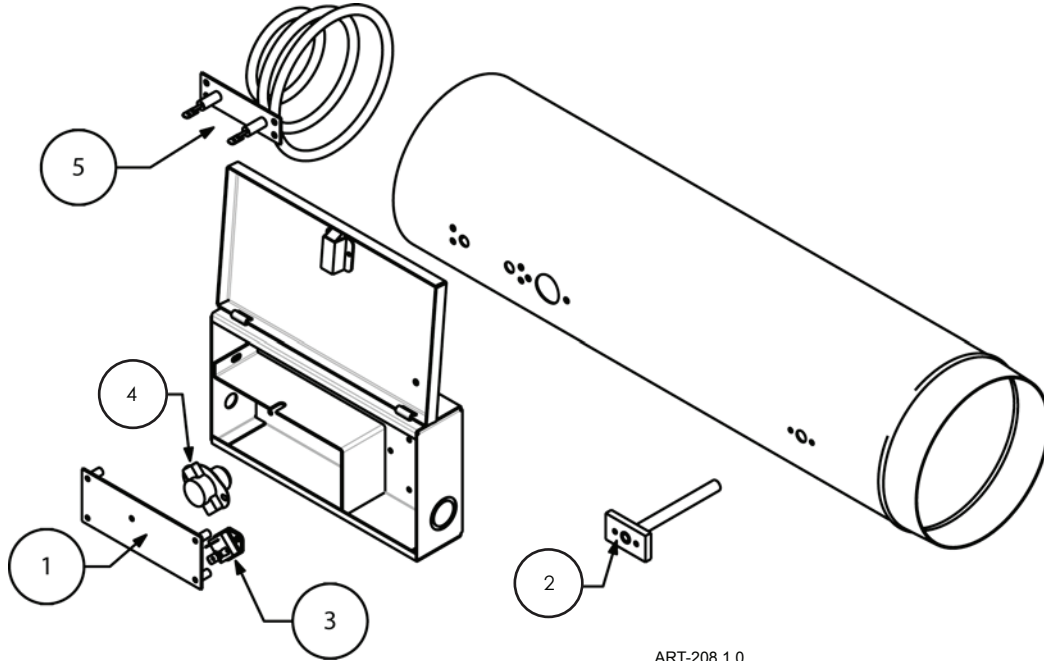
Replacement Part #	Description	
EM-II05158 / EM-II10118		
1	EM5620	2.5 kW SpinFin Element
2	5126	30-Amp Two Pole Contactor Relay
3	5625	180° High Limit Probe Sensor
4	5635	170° Auto High Limit
5	6636	Terminal Block

Custom Duct Heater

EM-II0515R and EM-II1011R

Replacement Part #		Description
EM-II0515R / EM-II1011R		
1	EM5621	2.5 kW Round Element
2	5126	30-Amp Two Pole Contactor Relay
3	5625	180° High Limit Probe Sensor
4	5633	118° Auto High Limit
5	6636	Terminal Block

WarmFlo® Make-Up Air Heater EM-WX0111R

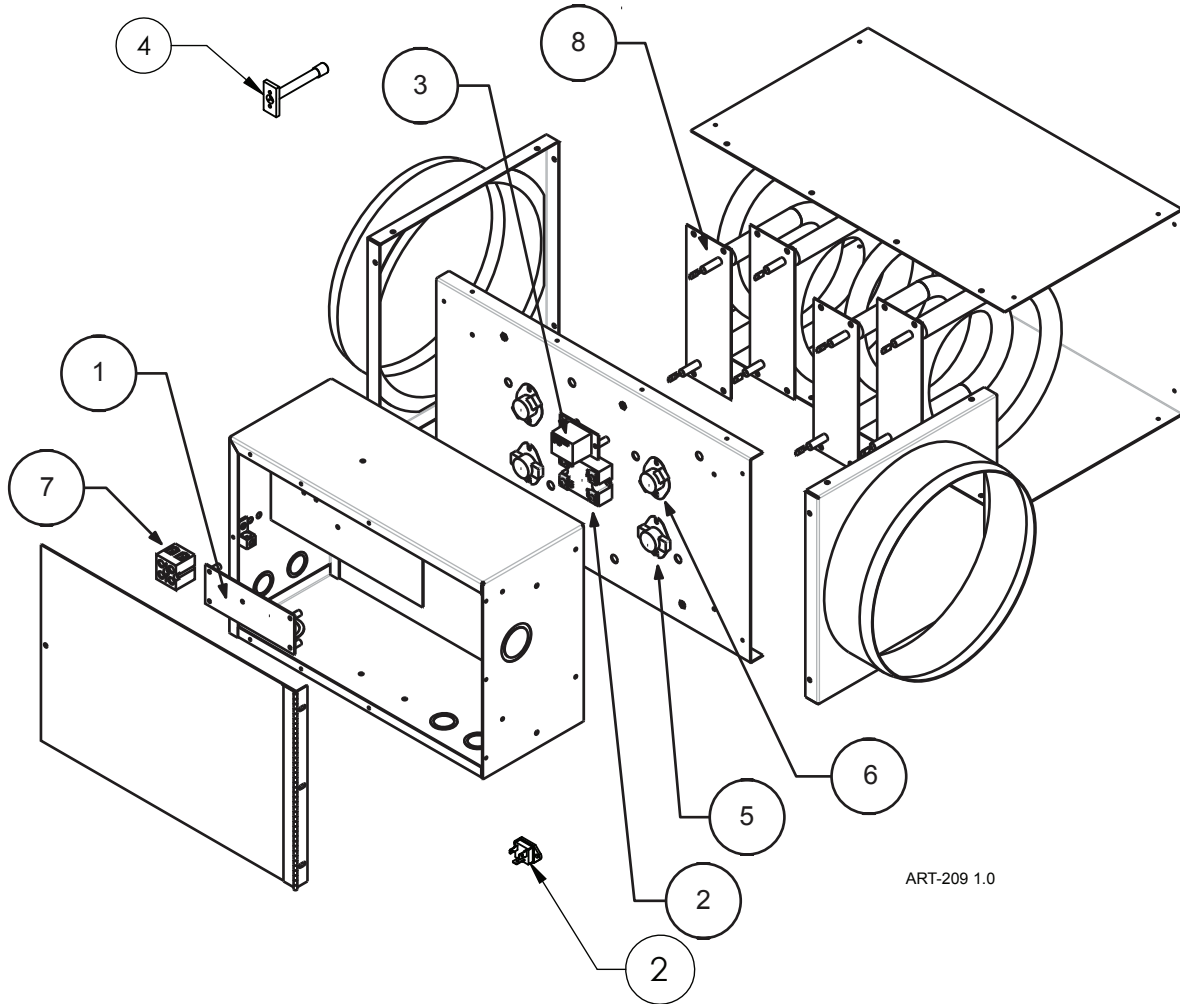


ART-208 1.0

Replacement Part #	Description
EM-WX0111R	
1	WFCD25605 Control Board
2	WFS3 Duct Sensor (For Heaters Manufactured After 7/2004)
2	@WFSST2FT Duct Sensor (For Heaters Manufactured Before 7/2004)
3	WF4036 30-Amp Triac Kit
4	6630 150° High Limit
5	EM6613 1 kW 120V Element
6	WCORD4035 Power Cord (Not Shown)

WarmFlo® Make-Up Air Heater

EM-WX***** Series



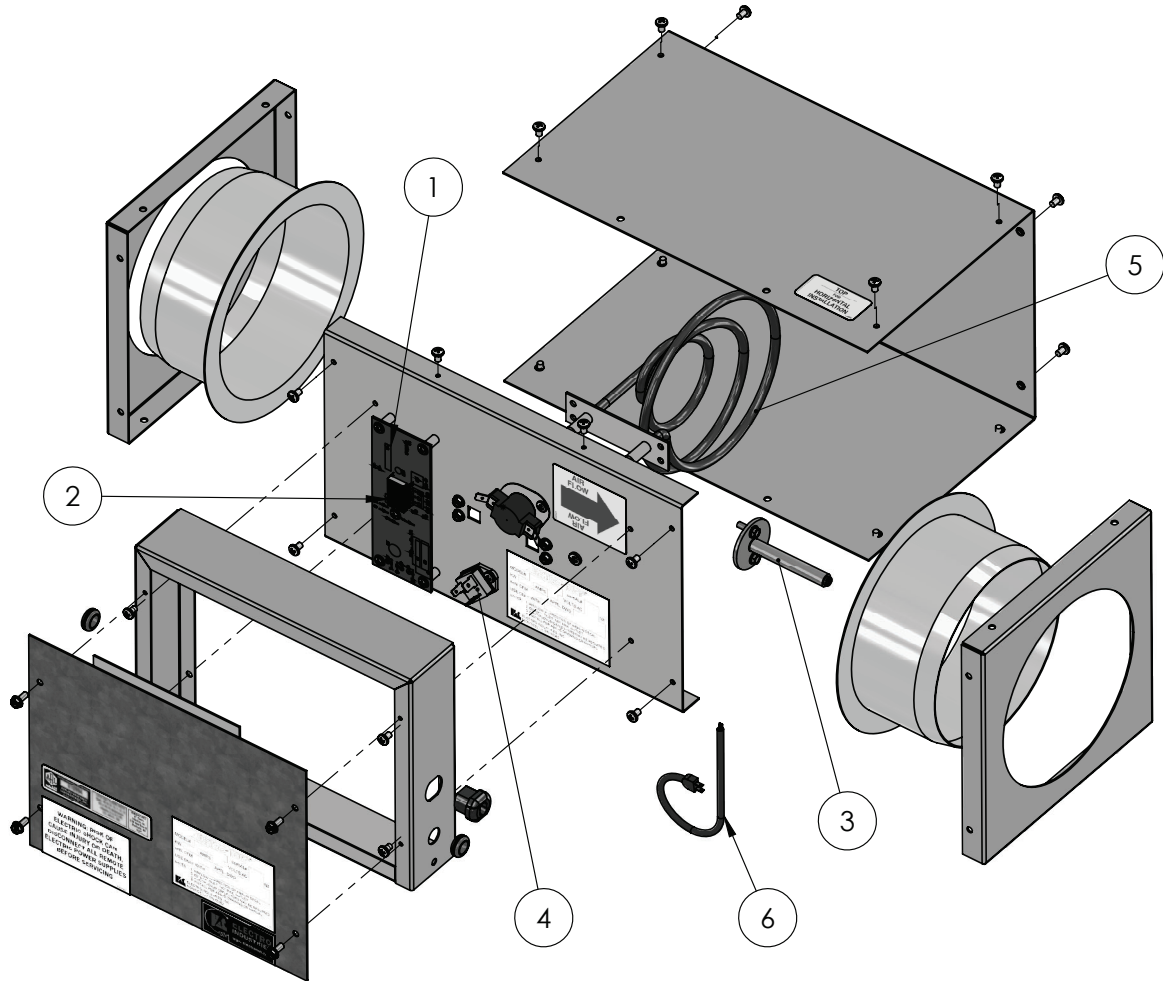
ART-209 1.0

Replacement Part #	Description	
EM-WX0212R		
2	WF4036	30-Amp Triac Kit
EM-WX0515R		
2	4037KIT	50-Amp Triac Kit
EM-WX1025R		
2	4037KIT	50-Amp Triac Kit
3	5123	Relay Board (EMR1B8102B)

Replacement Part #	Description	
Common Parts for the EM-WX*****		
1	WFCD25605	Control Board
4	WFS3	Duct Sensor (For Heaters Manufactured After 7/2004)
4	@WFSST2FT	Duct Sensor (For Heaters Manufactured Before 7/2004)
5	6630	150° High Limit
6	5633	118° High Limit
7	6636	Terminal Block
8	EM5621	2.5 kW Round Element

WarmFlo® Make-Up Air Heater

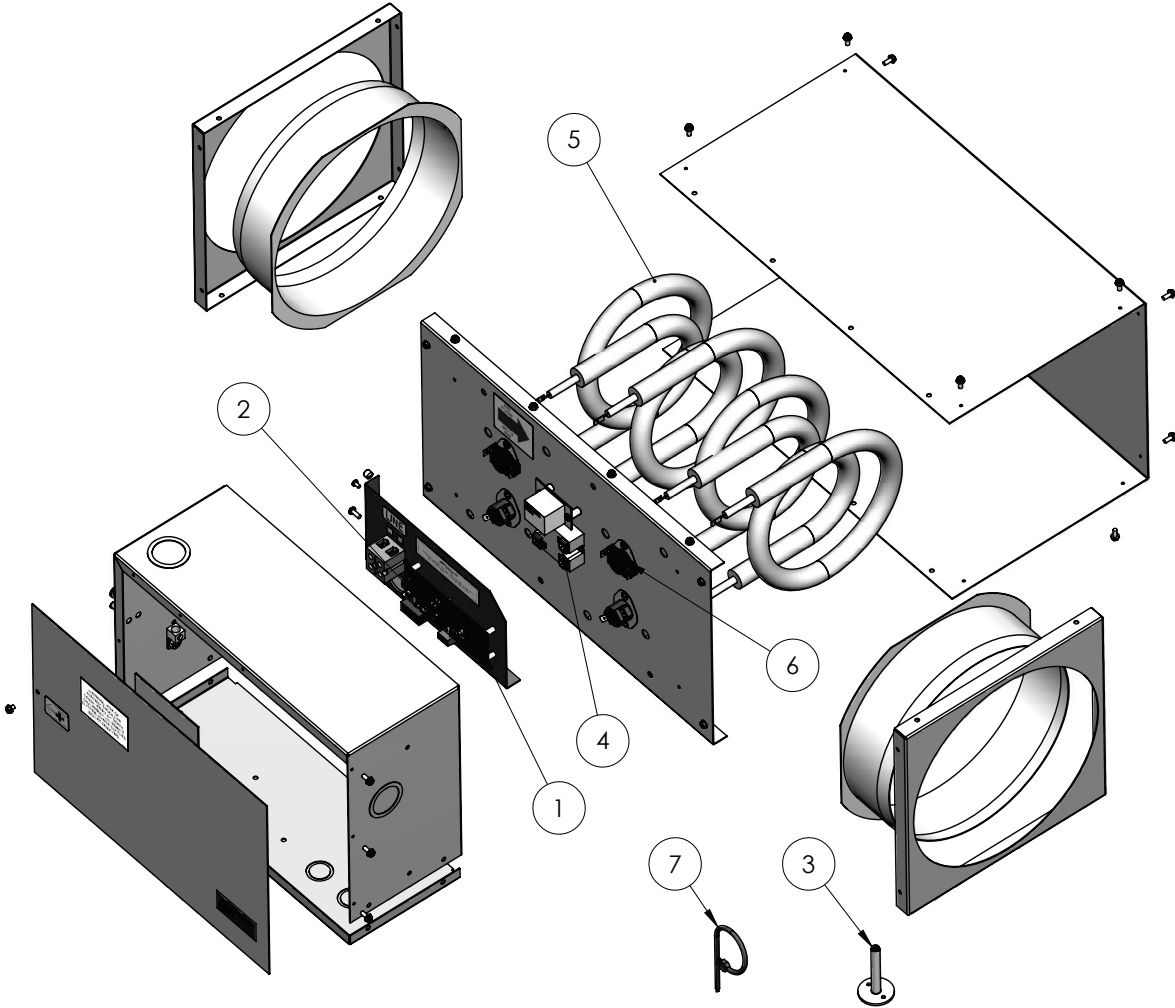
EM-WX01-120-1-06



Replacement Part #	Description
EM-WX01-120-1-06	
1	WFCD25605 Control Board
2	WFS3 Duct Sensor (For Heaters Manufactured After 7/2004)
2	@WFSST2FT Duct Sensor (For Heaters Manufactured Before 7/2004)
3	WF4036 30-Amp Triac Kit
4	6630 150° High Limit
5	EM6613 1 kW 120V Element
6	WCORD4035 Power Cord (Not Shown)

WarmFlo® Make-Up Air Heater

EM-WX**-240-1-**- Series

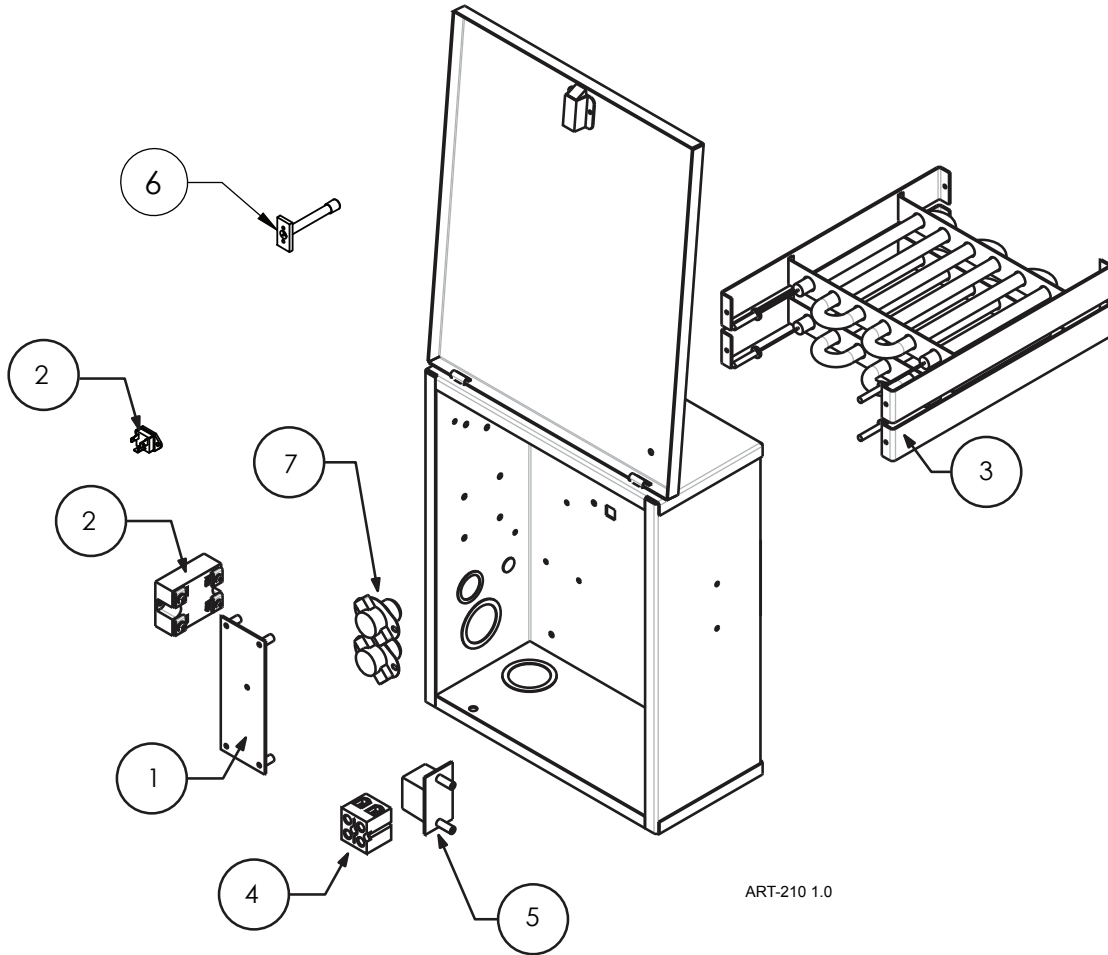


Replacement Part #	Description	
EM-WX02-240-1-08		
2	WF4036	30-Amp Triac Kit
EM-WX05-240-1-08		
2	4037KIT	50-Amp Triac Kit
EM-WX10-240-1-10		
2	4037KIT	50-Amp Triac Kit
3	5123	Relay Board (EMR1B8102B)

Replacement Part #	Description	
Common Parts for the EM-WX**-240-1-**-		
1	WFCD25605	Control Board
4	WFS3	Duct Sensor (For Heaters Manufactured After 7/2004)
4	@WFSST2FT	Duct Sensor (For Heaters Manufactured Before 7/2004)
5	6630	150° High Limit
6	5633	118° High Limit
7	6636	Terminal Block
8	EM5621	2.5 kW Round Element

WarmFlo® Make-Up Air Heater

EM-WC***** Series



ART-210 1.0

Replacement Part #	Description
--------------------	-------------

EM-WC0313H	
2	WF4036 30-Amp Triac Kit
3	Element <i>The 2.5 kW element is longer available. For element replacement purchase part # EM6615 4.8 kW Element and part # 4037KIT 50-Amp Triac Kit.</i>

EM-WC0515H	
2	4037KIT-WC05 Triac Kit, with Heat Sink for EM-WC05, CM1
3	EM6615 4.8 kW Element – 10"

EM-WC0515L	
2	4037KIT-WC05 Triac Kit, with Heat Sink for EM-WC05, CM1
3	EM6617 4.8 kW Element – 16"

Replacement Part #	Description
--------------------	-------------

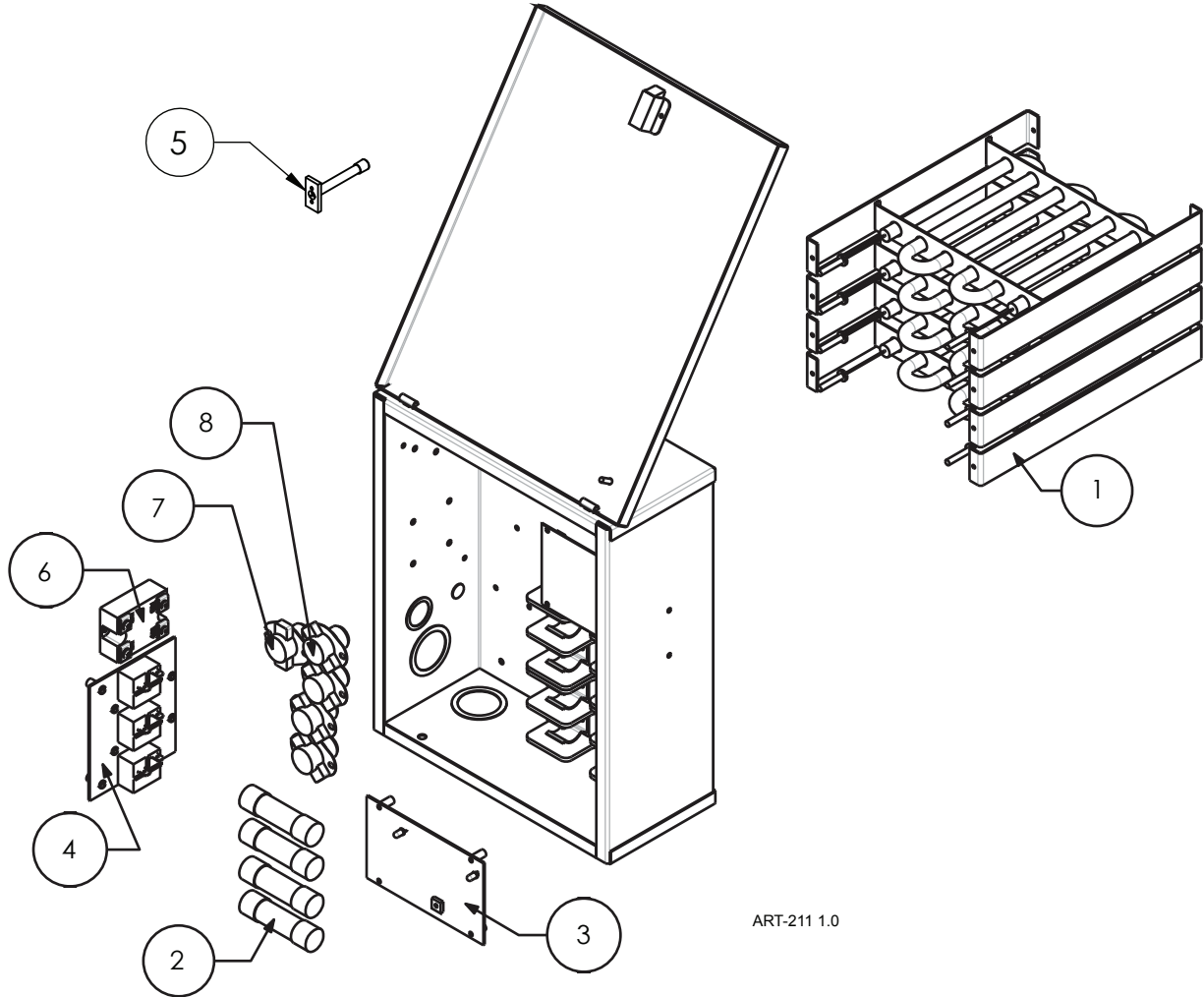
EM-WC1025H	
2	4037KIT 50-Amp Triac Kit
3	EM6615 4.8 kW Element – 10"
4	6636 Terminal Block
5	5123 Relay Board (EMR1B8102B)

EM-WC1025L	
2	4037KIT 50-Amp Triac Kit
3	EM6617 4.8 kW Element – 16"
4	6636 Terminal Block
5	5123 Relay Board (EMR1B8102B)

Common Parts for the EM-WC*****	
1	WFCD25605 Control Board
6	WFS3 Duct Sensor (For Heaters Manufactured After 7/2004)
6	WFSST Duct Sensor (For Heaters Manufactured Before 7/2004)
7	6630 150° High Limit

WarmFlo® Make-Up Air Heater

EM-WM***** Series



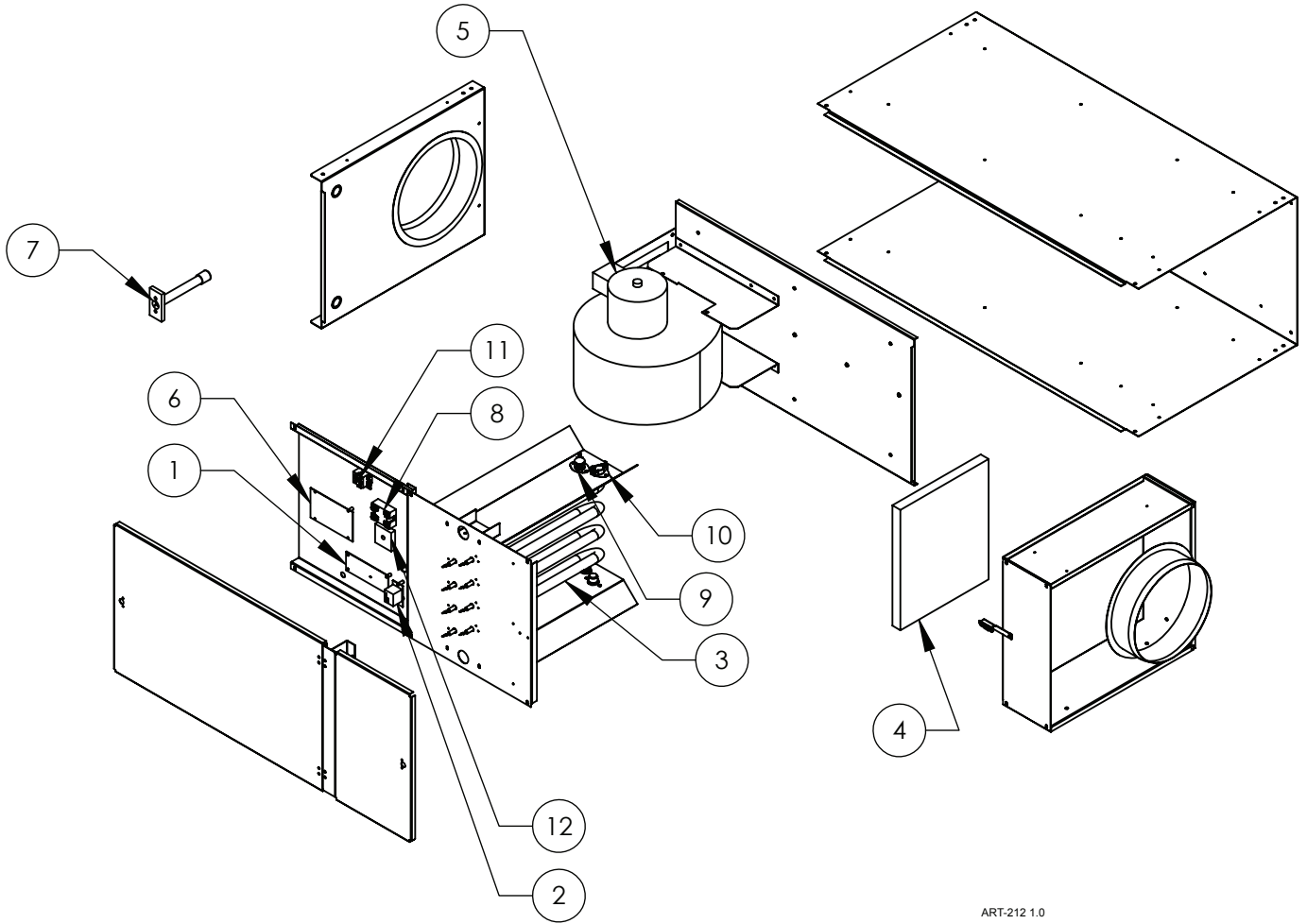
ART-211 1.0

Replacement Part #	Description	
EM-WM1134H		
1	EM6615	4.8 kW Element – 10"
2	UFUSE5144	40-Amp Fuse
EM-WM1535L		
1	EM6617	4.8 kW Element – 16"
2	UFUSE6640	50-Amp Fuse
2	UFUSE5141	30-Amp Fuse
EM-WM1536L		
1	EM6612	5 kW Element 208V, 3-Phase
2	UFUSE6640	50-Amp Fuse
EM-WM2035L		
1	EM6617	4.8 kW Element – 16"
2	UFUSE6640	50-Amp Fuse

Replacement Part #	Description	
Common Parts for the EM-WM*****		
3	WF2BK	WarmFlo II Control Board WE / WM
4	WFR3T5616	Relay Board
5	WFS5F	Duct Sensor (For Heaters Manufactured After 7/2004)
5	WFSSF	Duct Sensor (For Heaters Manufactured Before 7/2004)
6	4037KIT	50-Amp Triac
7	5636	135° High Limit
8	6630	150° High Limit

WarmFlo® Make-Up Air Heater

EM-WH***** Series

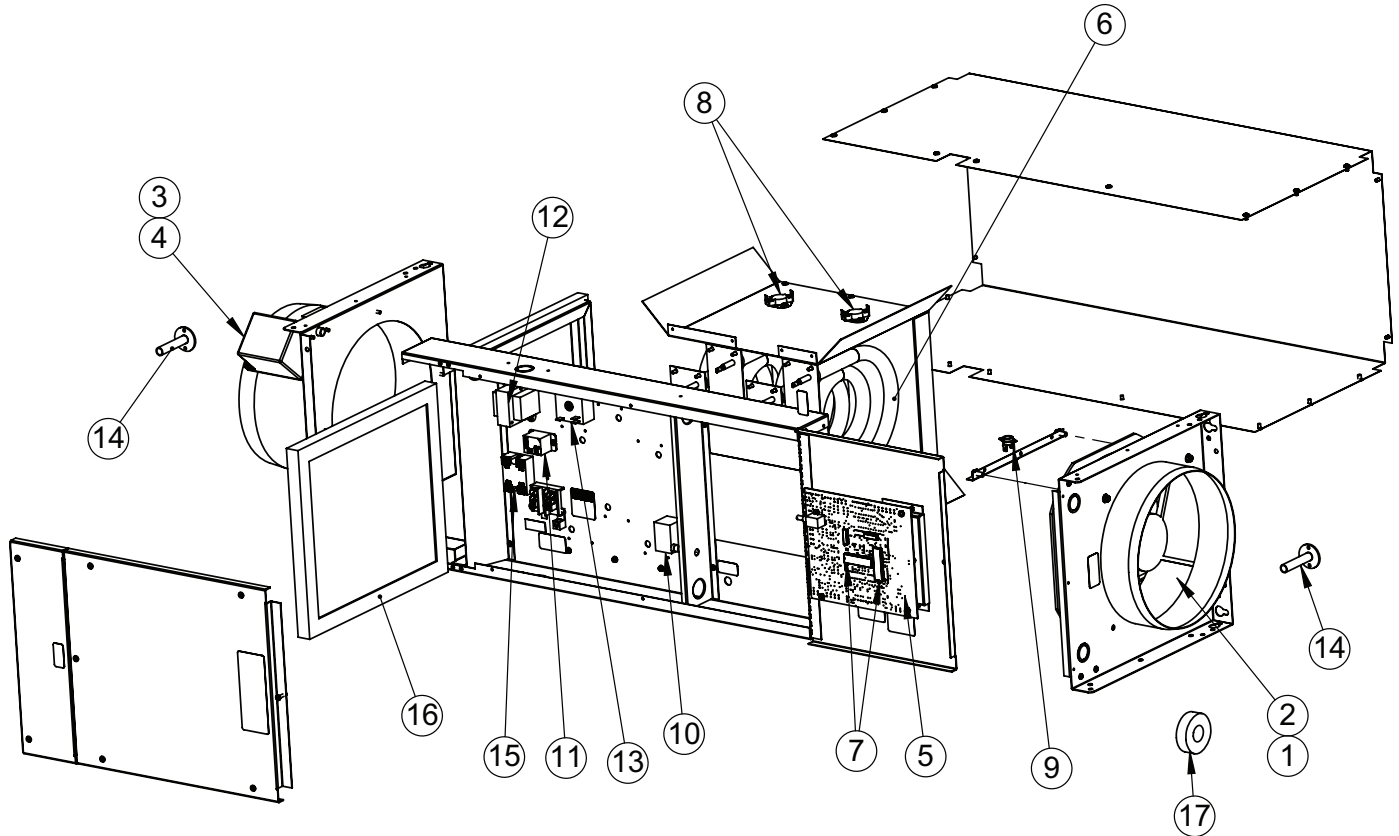


ART-212 1.0

Replacement Part #	Description	
EM-WH0515J		
3	EM5621	2.5 kW Round Element
4	5712	13" x 11" Filter
5	5717	300 CFM Blower Motor
EM-WH1025K		
2	5123	Relay Board (EMR1B8102B)
3	EM5620	2.5 kW SpinFin Element
4	5722	18" x 15.5" Filter
5	5719	700 CFM Blower Motor

Replacement Part #	Description	
Common Parts for the EM-WH*****		
1	WFCD25605	Control Board
6	EMBRM5711	Relay / Transformer Board
7	WFS3	Duct Sensor (For Heaters Manufactured After 7/2004)
7	@WFSST2FT	Duct Sensor (For Heaters Manufactured Before 7/2004)
8	4037KIT	50-Amp Triac Kit
9	5636	135° High Limit
10	6630	150° High Limit
11	6636	Terminal Block
12	9481	Phase Controller

Make-Up Air Heater EM-MC* and EM-MD* Series



Replacement Part #	Description
--------------------	-------------

EM-MC*

1	5716-08	Fan Motor 8" 300 CFM 230V
3	5720-08	Damper Inlet 8" Motorized 24V Power O/C

EM-MD*

2	5716-10	Fan Motor 10" 600 CFM 230V
4	5720-10	Damper Inlet 10" Motorized 24V Power O/C

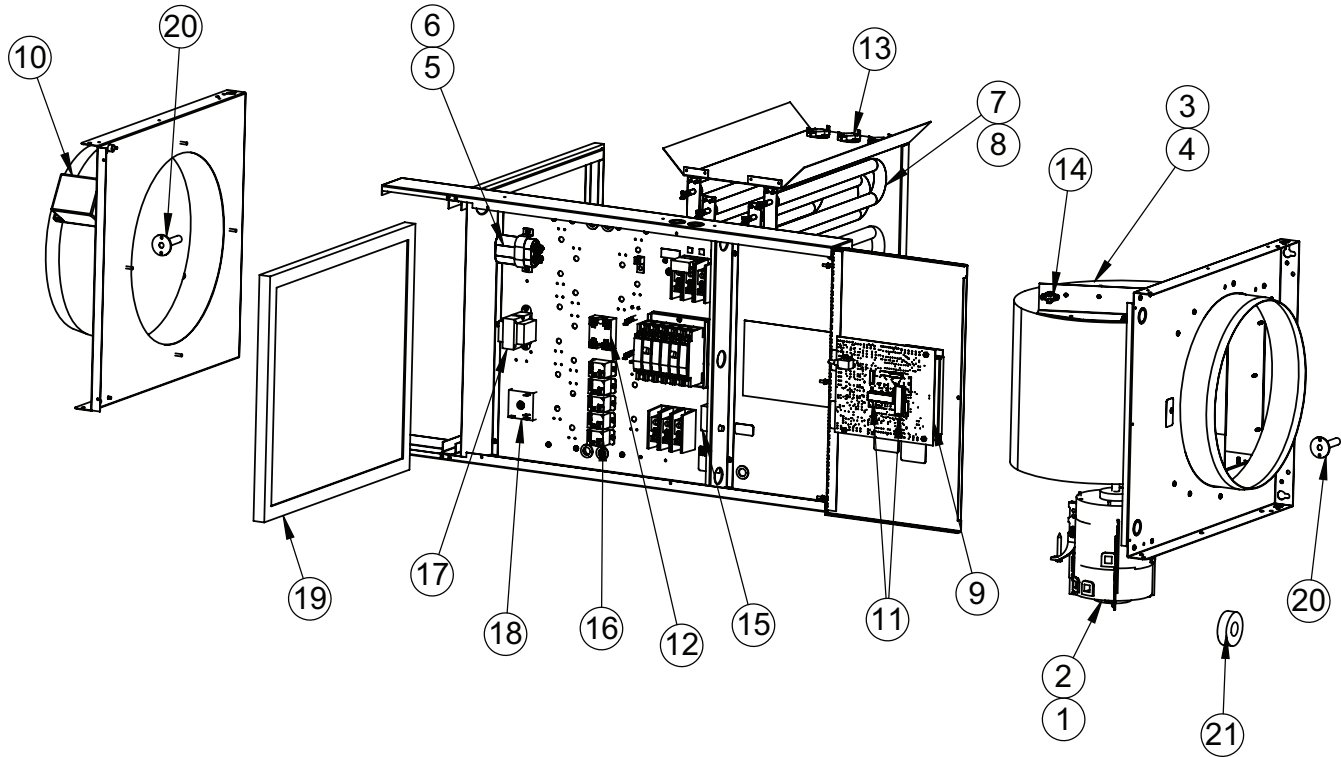
Replacement Part #	Description
--------------------	-------------

Common Parts for the EM-MC* and EM-MD*

5	EMMUS5712	Control Board
6	EM5621	2.5 kW Round Element
7	UIC9776	Microprocessor
8	5609	Limit 0-100/C-AMP@VAC
9	5610	Limit 0-99/C-85 10AMP@240VAC
10	5611	Limit 140° F Cap Reset
11	5128C	30-Amp DC Relay
12	5541	Transformer, 120/208/240:24VAC
13	9481	Phase/Motor Speed Control, 6A
14	EMCBW8020	Sensor Harness
15	4038KIT	Triac Kit, 24VDC IN
16	5721-2	Replacement Filter Medium 12" X 13.75"
17	3629	Current Transformer (CT)

Make-Up Air II Heater

EM-ME*, EM-MF*, and EM-MG* Series



Replacement Part #	Description	
--------------------	-------------	--

EM-ME* and EM-MF*		
1	5711	Motor ¼ HP PSC 208-230V 3SPD
3	5847	Blower D Drive 9 X 4
5	5706	Cap Motor Run 5.0 MFD 370V
7	EM5620	2.5 kW Spin Fin Element 240/208V, 1-Phase
8	EM5622	2.5 kW Element 208V, 3-Phase

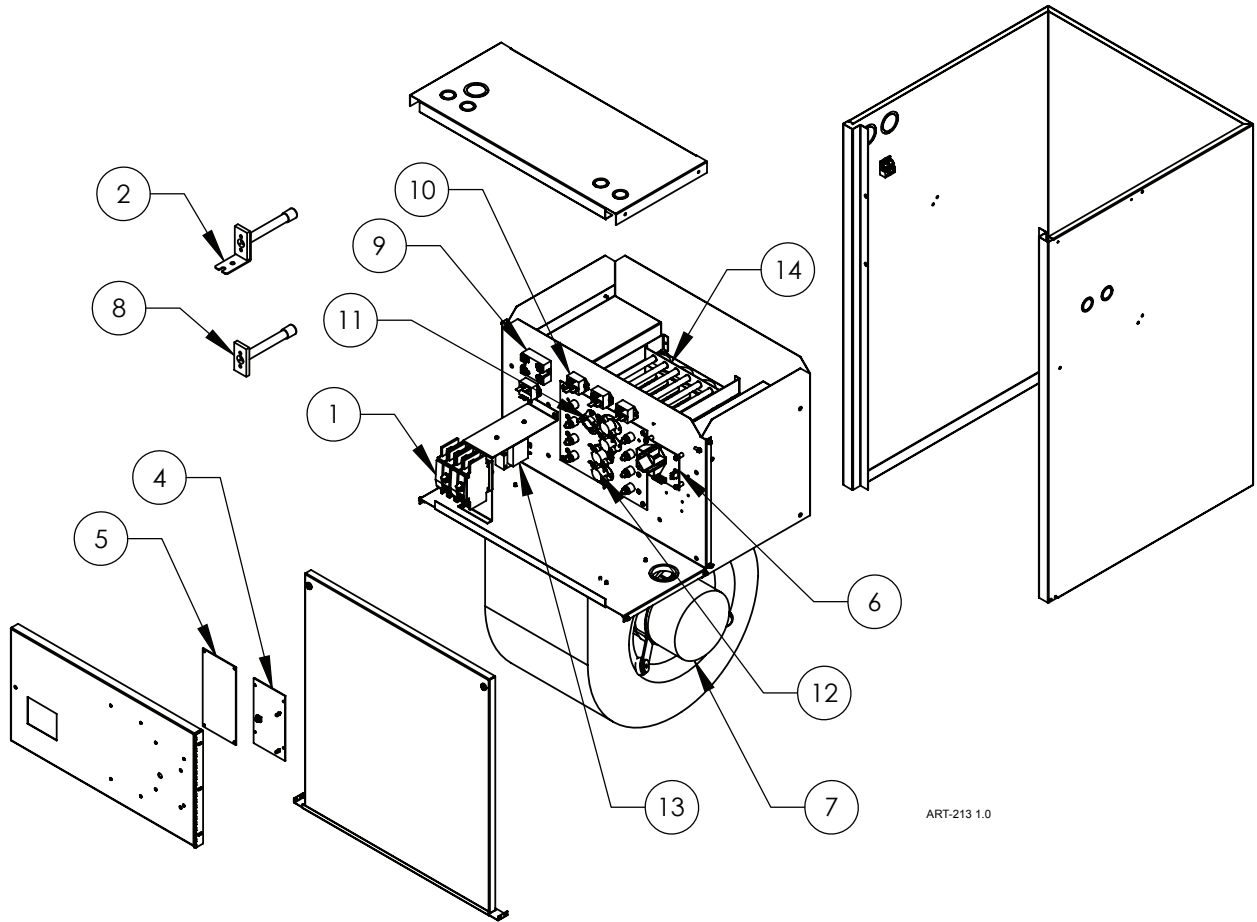
EM-MG*		
2	5718	Motor ½ HP PSC 208-230V 4SPD
4	5849	Blower D Drive 9 X 9
6	5707	Cap Motor Run 7.5 MFD 370V
7	EM5620	2.5 kW Spin Fin Element 240/208V, 1-Phase
8	EM5622	2.5 kW Element 208V, 3-Phase

Replacement Part #	Description	
--------------------	-------------	--

Common Parts for the EM-ME*, EM-MF*, and EM-MG*		
9	EMMUS5712	Control Board
10	5720-14	Damper Inlet 14" Motorized 24V Power O/C
11	UIC9776	Microprocessor
12	4038KIT	Triac Kit, 24VDC IN
13	5609	Limit 0-100/C-AMP@VAC
14	5610	Limit 0-99/C-85 10AMP@240VAC
15	5611	Limit 140° F Cap Reset
16	5128C	30-Amp DC Relay
17	5541	Transformer, 120/208/240:24VAC
18	9481	Phase/Motor Speed Control, 6A
19	5721-3	Replacement Filter Large 18" X 21.75"
20	EMCBW8020	Sensor Harness
21	3629	Current Transformer (CT)

WarmFlo® Air Handler/Electric Furnace

HE-*-*-21



ART-213 1.0

Replacement Part #		Description
HE-A-10-21		
1	5652	Square D 60-Amp Circuit Breaker
HE-A-15-21		
1	5650	Square D 30-Amp Circuit Breaker
1	5652	Square D 60-Amp Circuit Breaker
HE-A-20-21		
1	5652	Square D 60-Amp Circuit Breaker
HE-H-10-21		
1	5652	Square D 60-Amp Circuit Breaker
2	WFS25F	Outdoor Sensor
HE-H-15-21		
1	5650	Square D 30-Amp Circuit Breaker
1	5652	Square D 60-Amp Circuit Breaker
2	WFS25F	Outdoor Sensor

Replacement Part #		Description
HE-H-20-21		
1	5652	Square D 60-Amp Circuit Breaker
2	WFS25F	Outdoor Sensor
Common Parts for the HE-*-*-21		
4	WF2FR	WarmFlo Control Board
4a	UIC9266 R-080	Microchip v. 2.3* (Specify Code – AH, AHS)
5	HEIBG6707	ECM Motor Control Board
6	WFPDC5632	AC/DC Power Supply Board
7	HE5850	½ HP ECM Motor
8	WFS5F	Supply Sensor
9	4038KIT	50-Amp Triac Kit
10	5128C	30-Amp DC Relay
11	5636	135° High Limit
12	6630	150° High Limit
13	5541	40VA Transformer with Pigtails
14	EM6615	4.8 kW Element – 10"



**ELECTRO
INDUSTRIES**

Monticello, Minnesota
800.922.4138
www.electromn.com